

CLASSIC INSTRUMENTS

*The finishing touch**



STYLE · CRAFTSMANSHIP · ELEGANCE

Welcome *A message from John D. McLeod, owner of Classic Instruments*

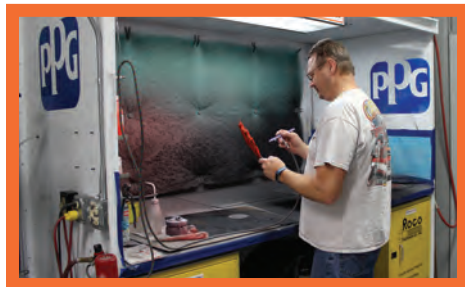
At Classic Instruments we promote a family oriented work environment. We realize that the impact of our business goes beyond providing the best instrumentation available and has an effect on our families and community. As company president, I personally welcome your input and ideas. I believe that the harder we work the better we get. I love the hot rod business and am blessed to be a part of this industry. If you ever have a concern, a question, or an idea, you may contact me directly on my cell phone at 231-409-2938 or drop me a line via email to john@classicinstruments.com.

- John D. McLeod III



CLASSIC INSTRUMENTS

The finishing touch[®]



In Loving Memory of Jack McLeod

Universal Fit & Individual Instruments2	Direct Fit Packages.....42
All American™ Series 3	1940 Ford Package 43
All American Nickel™ Series..... 4	1949 – '50 Ford Car Package 44
All American Tradition™ Series 5	1949 – '50 Chevy Car Package..... 45
AutoCross™ Gray Series 6	1951 – '52 Chevy Car Package..... 46
AutoCross™ Yellow Series..... 7	Bel Era™ 1955 – '56 Chevy Package 47
Classic™ Series..... 8	Bel Era II™ 1955 – '56 Chevy Package..... 48
Classic White™ Series 9	Bel Era III™ 1955 – '56 Chevy Package 49
Esquire™ Series..... 10	'57 Chevy Package & Tetra™ Series 50
G/Stock™ Series..... 11	1959 – '60 Full Size Chevy Package 51
Hot Rod® Series..... 12	1963 – '65 Nova Package 52
Moal Bomber™ Series..... 13	1963 – '67 Corvette Package 53
Nostalgia VT™ Series 14	1964 – '65 Chevelle Package..... 54
SG™ Series..... 15	1965 – '66 Mustang Package 55
Silver™ Series..... 16	1966 – '67 Chevelle Package..... 56
Traditional™ Series 17	1966 – '77 Ford Bronco Package 57
V8 Red Steelie™ Series 18	1967 – '68 Mustang Package 58
V8 Speedster™ Series 19	1967 – '68 Camaro Package..... 59
Velocity™ Black Series..... 20	1970 – '72 Chevelle SS Package..... 60
Velocity™ White Series 21	Truck Direct-fit Packages 61
Vintage® Series..... 22	1947 – '53 Chevy & 1954 – '55 Chevy First Series
White Hot™ Series..... 23	Truck Packages 62
So-Cal® Series..... 24	Tach Force™ 1955 – '59 Chevy Truck Package
Combination & Auxiliary Instruments25	Second Series..... 63
6-Pack™ 26	1953 – '55 Ford F-100 Truck Package 64
All American™ Package..... 27	1956 Ford F-100 Truck Package 65
B.O.G™ (Big Ol' Gauge)..... 28	1961 – '66 Ford F-100 Truck Package 66
Duals & Quads 29	1964 – '66 Chevy Truck Package..... 67
Ultimate™ & Speedtachular™ Speedometers 30	1967 – '72 Chevy Truck Package..... 68
Clocks..... 31	1973 – '87 Chevy/GMC Truck Package..... 69
Rocket Tach™ 32	Model Specific Dash Insert Kits..... 70
Short-sweep Auxiliary Instruments..... 33	Gauge Dimensions 71
Full-sweep Auxiliary Instruments 34	Design Options 72
Performance Series35	Lighting Options..... 73
Special Applications36	Sending Units & Accessories, Fuel-Link™ 74–75
Custom & Retro-fit™ Design Services.....37	Sky Drive™ & Sky Fence™ 76
Custom Design Services 38–39	
Retro-fit™ Design Services 40–41	

The finishing touch 



Look for this emblem
on the back of your gauges!

ZEUS SPEEDOMETER TECHNOLOGY

Our Zeus Speedometer Technology offers more robust electronics for an easier installation. ZST allows for any pulse generator, ECM, or VSS signal to be used with no additional interface necessary between the sending unit and the speedometer. There are no dip or toggle switches on the back of the gauges, simply push a button to calibrate and a single snap-in harness makes wiring simple. ZST is self-diagnosing, giving the user the ability to identify common issues and it has signal processing software that ensures smooth pointer operation, even in fluctuating signal conditions. This technology also gives our tachometers built-in electronics for an optional shift light, push-button programming for the number of cylinders, and works with all direct coil connections or ECM signals, again, with no additional interface or module needed.

Universal Fit & Individual Instruments

BY SERIES

For a complete list of available sets, instruments, and options for each series please visit our website. All speedometers can be special ordered in kilometers per hour. All gauge sets come standard with GM senders. Please specify engine and transmission at the time of order for correct sender application. Senders sold separately with individual gauges.

Looking for an option or combination you don't see listed?
Just give us a call! (800) 575.0461.

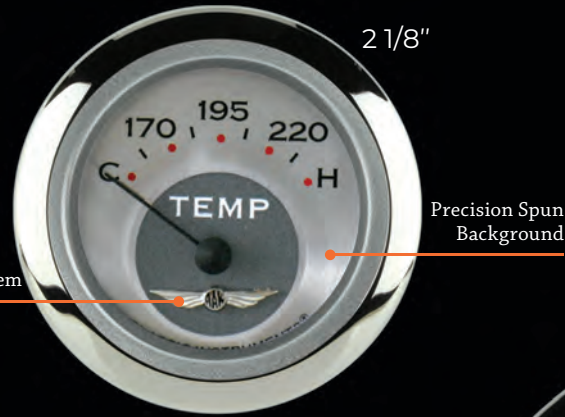
All American™ Series

MODERN ELEGANCE

Available in two, three, five, & six gauge sets and individually. Visit our website for product offering.



2 5/8"

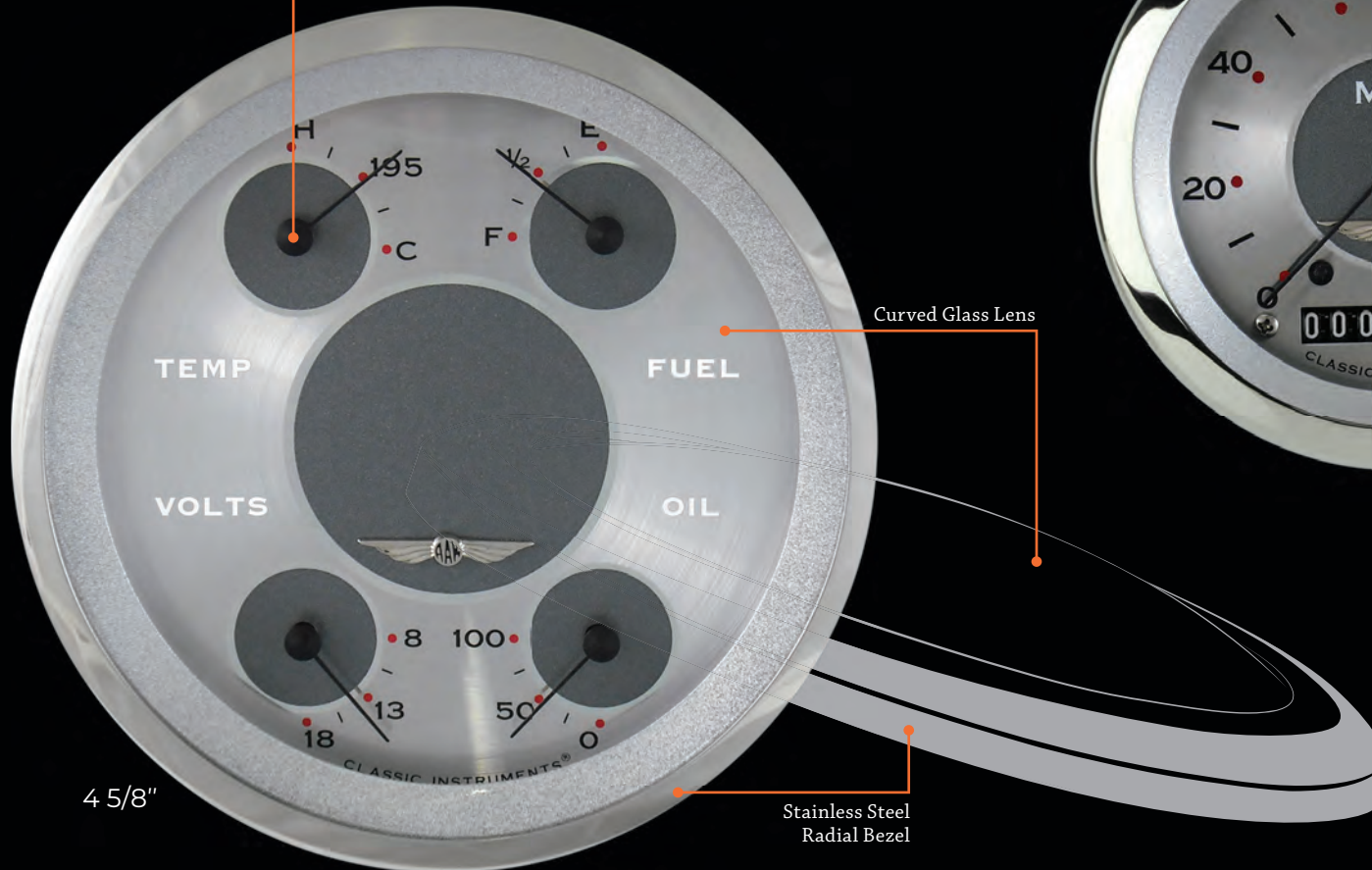


2 1/8"

Precision Spun Background

Elegant Wing Emblem

All combination gauges in this series use tear drop pointers with the tail removed



4 5/8"

Stainless Steel Radial Bezel

Curved Glass Lens



3 3/8"

Teardrop Pointer

All American Nickel™ Series

TIMELESS LUXURY

Available in two, three, five, & six gauge sets and individually. Visit our website for product offering.

2 1/8"



2 5/8"



Elegant Wing Emblem

Luxurious Gold Background

3 3/8"



Spun Metal Dial Face

Curved Glass Lens



4 5/8"

Teardrop Pointer

Stainless Steel High Step Bezel

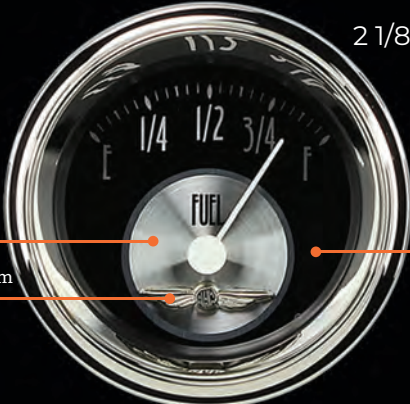
All American Tradition™ Series

RICH ACCENT

Available in two, three, five, & six gauge sets and individually. Visit our website for product offering.



2 5/8"



2 1/8"

Spun Center

Elegant Wing Emblem

Rich Black Background



3 3/8"

Curved Glass Lens



4 5/8"

Stainless Steel High Step Bezel

Teardrop Pointer

AutoCross™ Gray Series

MODERN SPORT APPEARANCE

Available in two, three, five, & six gauge sets and individually. Visit our website for product offering.

2 1/8"



2 5/8"



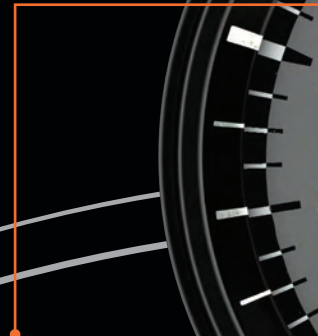
3 3/8"



Pool Cue Pointer



Flat Glass Lens



Matte-Black Low Step Bezel

4 5/8"

AutoCross™ Yellow Series

MODERN SPORT APPEARANCE

Available in two, three, five, & six gauge sets and individually. Visit our website for product offering.



Flat Glass Lens

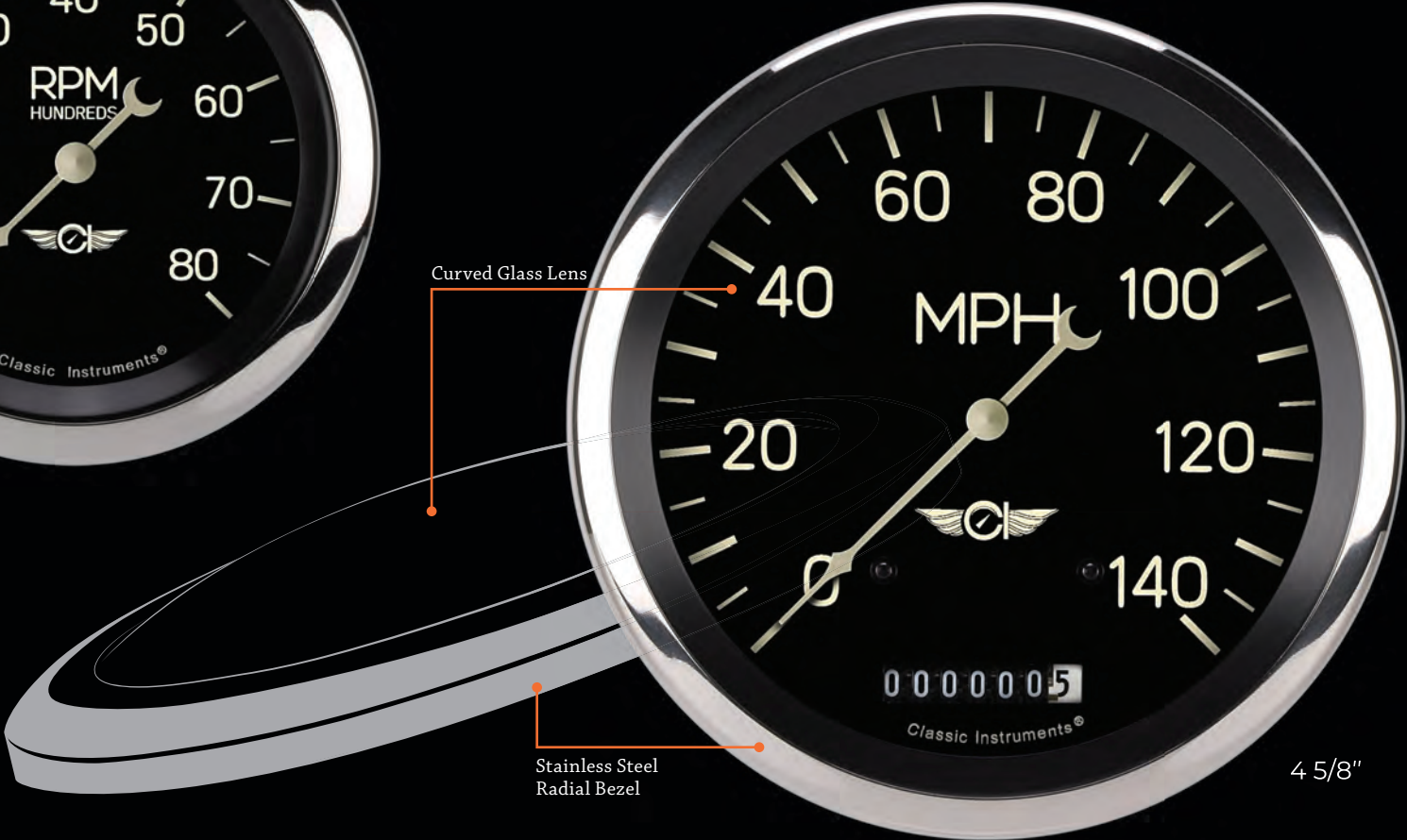
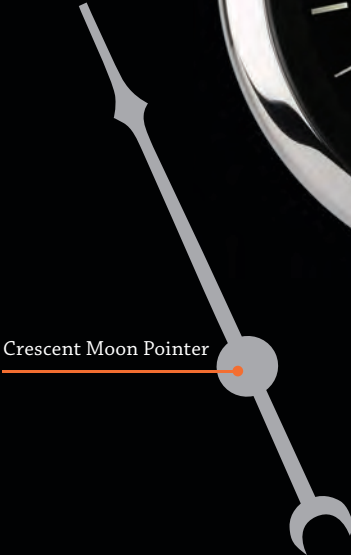
Pool Cue Pointer

Matte-Black
Low Step Bezel

Classic™ Series

INDUSTRIAL NOSTALGIA

Available in five & six gauge sets and individually.
Visit our website for product offering.



Classic White™ Series

PURIST STYLE

Available in two, three, four, five, & six gauge sets and individually. Visit our website for product offering.



2 5/8"



2 1/8"



3 3/8"



4 5/8"

Flat Glass Lens

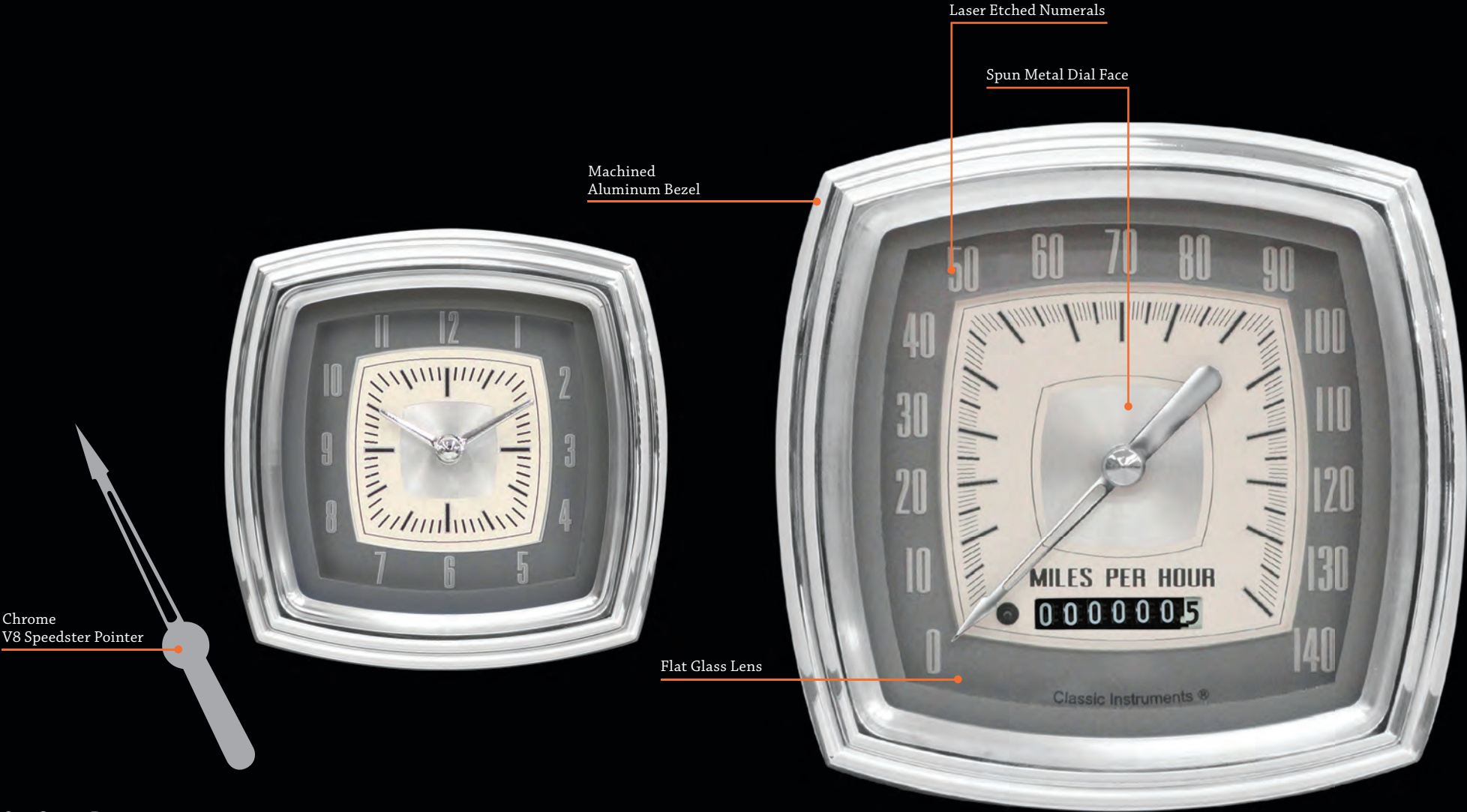
Stainless Steel Low Step Bezel

Teardrop Pointer

Esquire™ Series

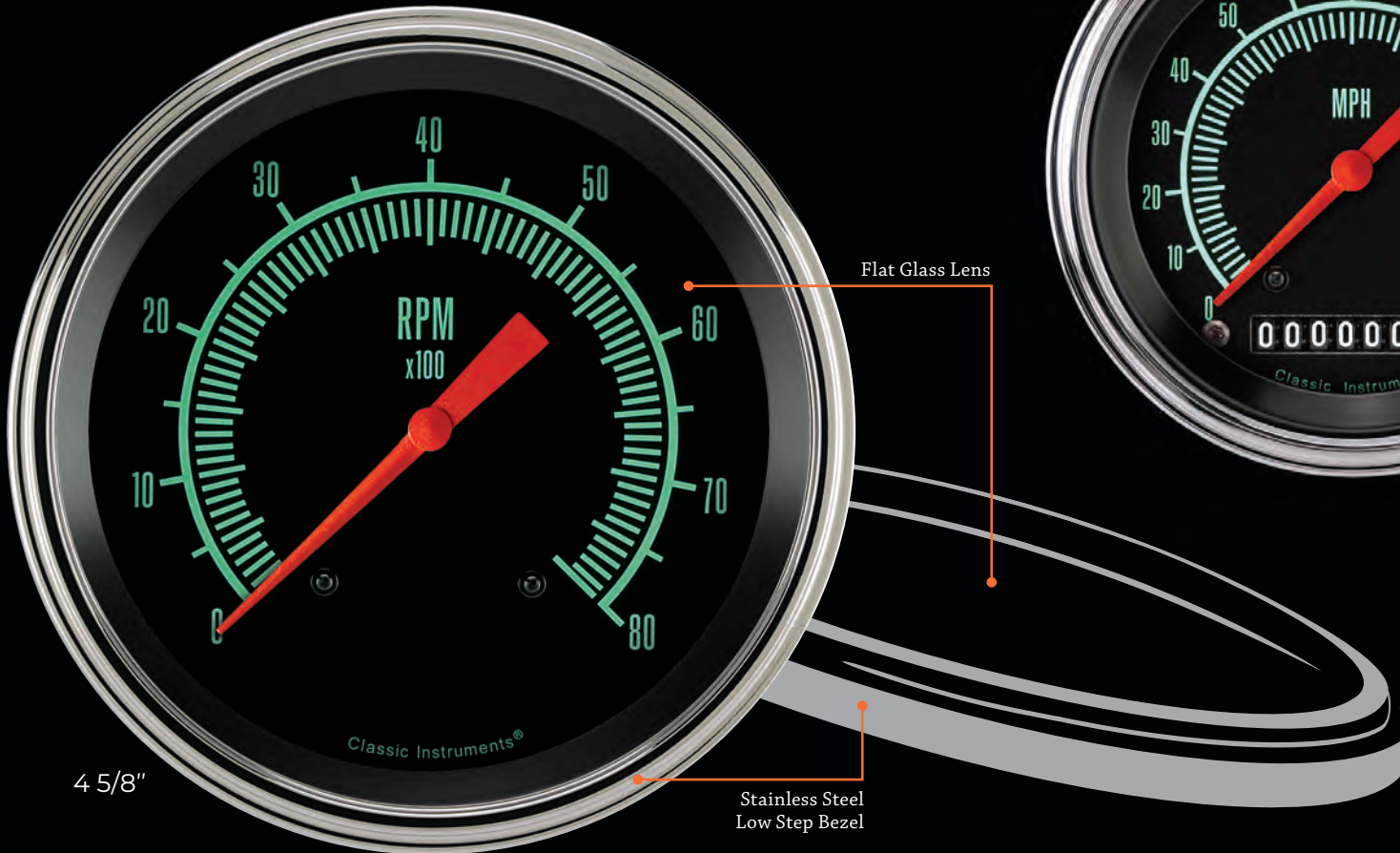
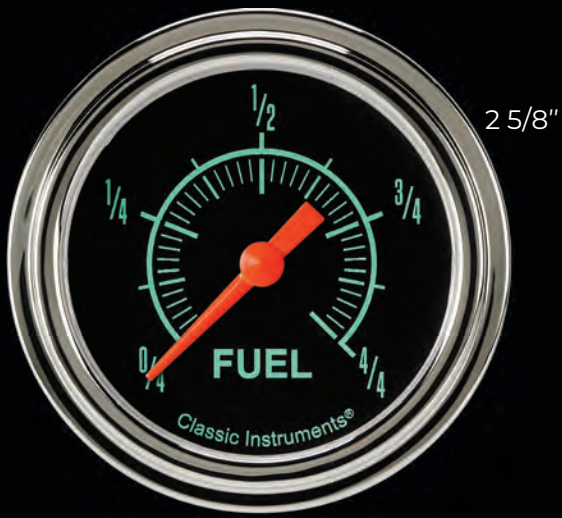
STYLISH EXCELLENCE

Available in two, three, five, & six gauge sets and individually. Visit our website for product offering.



See Gauge Dimensions on pg. 71 for additional details.

Available in two, three, four, five, & six gauge sets and individually. Visit our website for product offering.



Hot Rod® Series

HOT ROD HERITAGE

Available in two, three, four, five, & six gauge sets and individually. Visit our website for product offering.

2 1/8"



2 5/8"



3 3/8"



Pool Cue Pointer



Flat Glass Lens



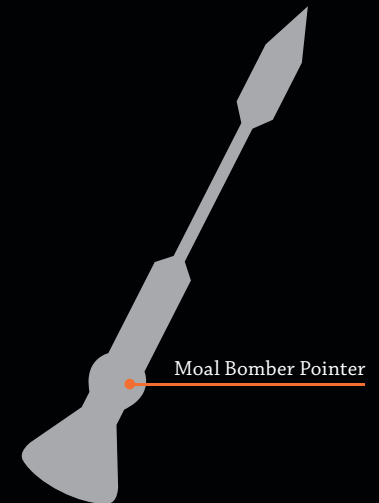
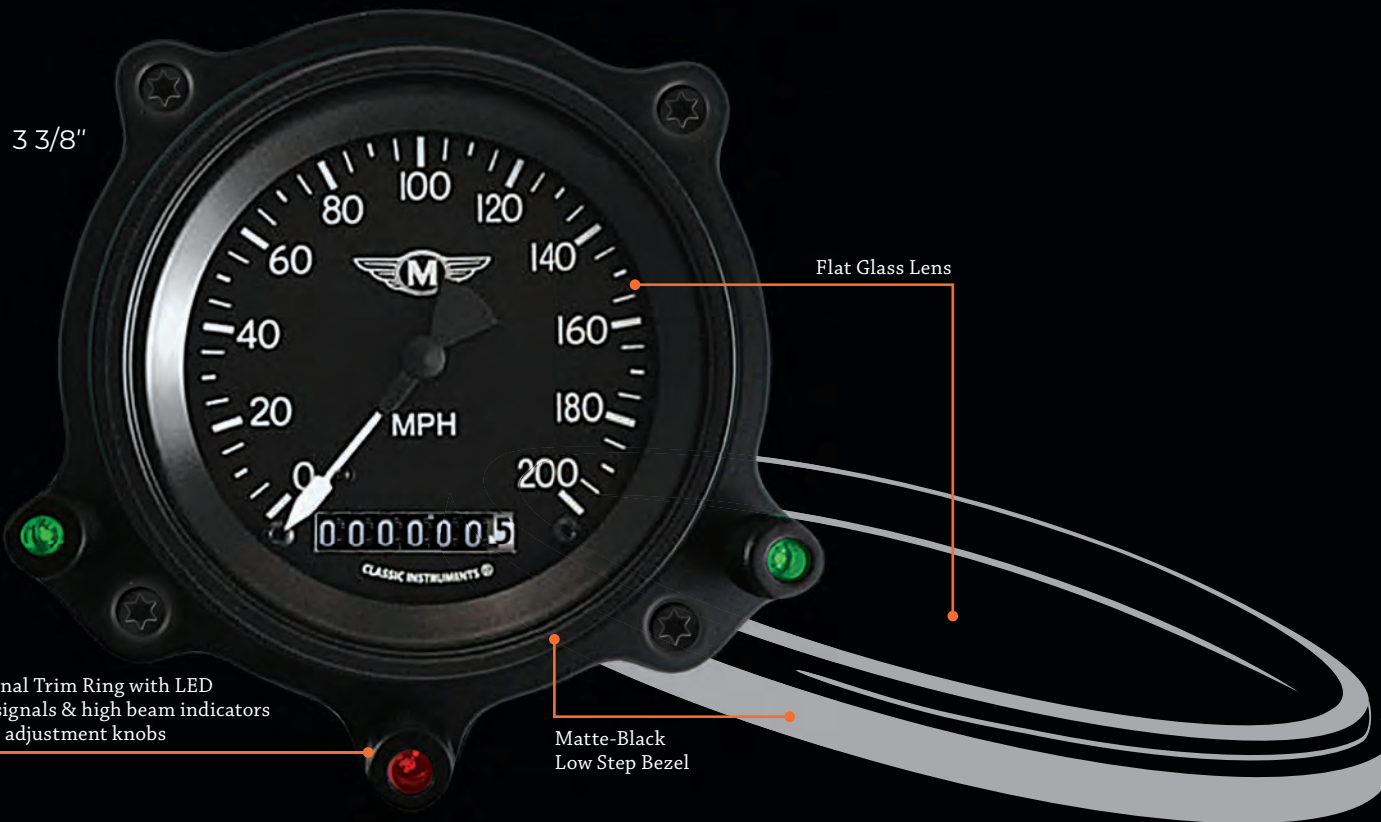
Stainless Steel Low Step Bezel

4 5/8"

Moal Bomber™ Series

AIRCRAFT AESTHETIC

Available in five, & six gauge sets and individually.
Visit our website for product offering.



Nostalgia VT™ Series

GOLDEN AGE

Available in two, three, four, five, & six gauge sets and individually. Visit our website for product offering.

2 1/8"



2 5/8"



3 3/8"

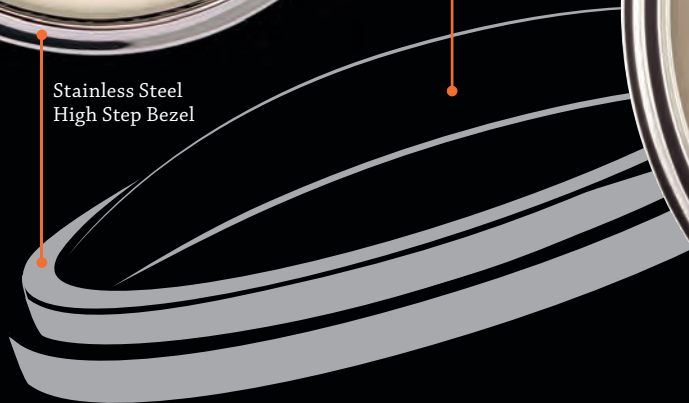


Raised Accent Ring

Chrome V8 Speedster Pointer



Stainless Steel High Step Bezel



Curved Glass Lens



4 5/8"

VERSATILE DESIGN

Available in two, three, four, five, & six gauge sets and individually. Visit our website for product offering.



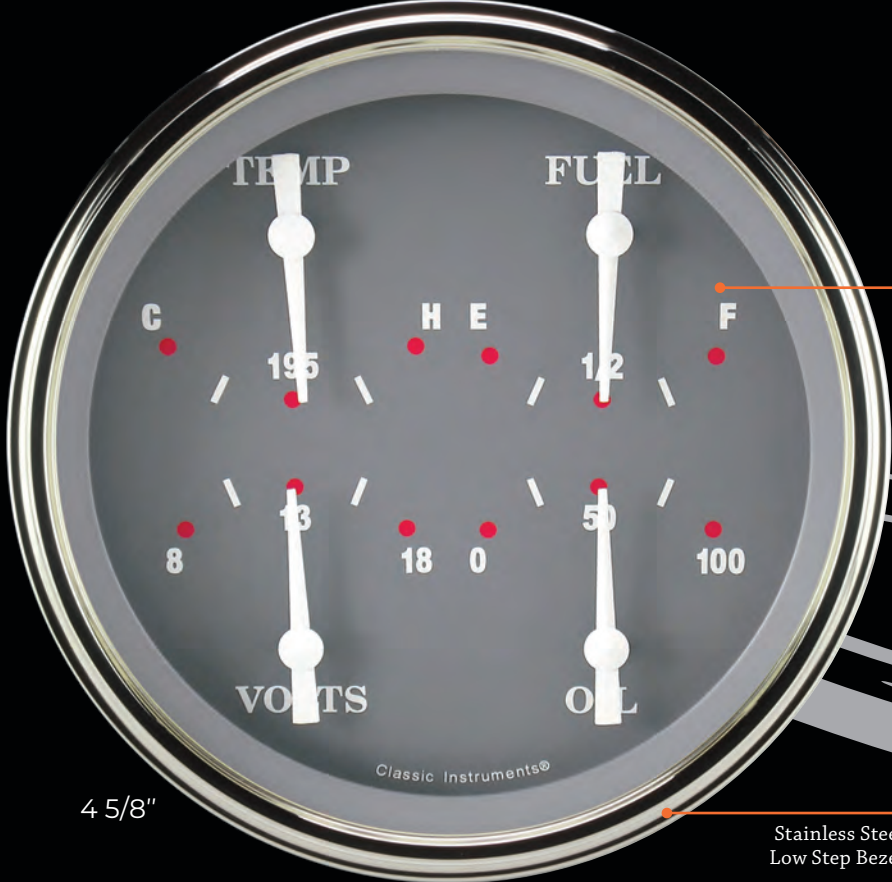
2 5/8"



2 1/8"



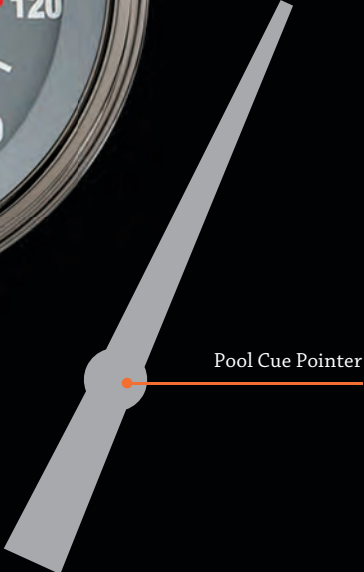
3 3/8"



4 5/8"

Flat Glass Lens

Stainless Steel Low Step Bezel



Pool Cue Pointer

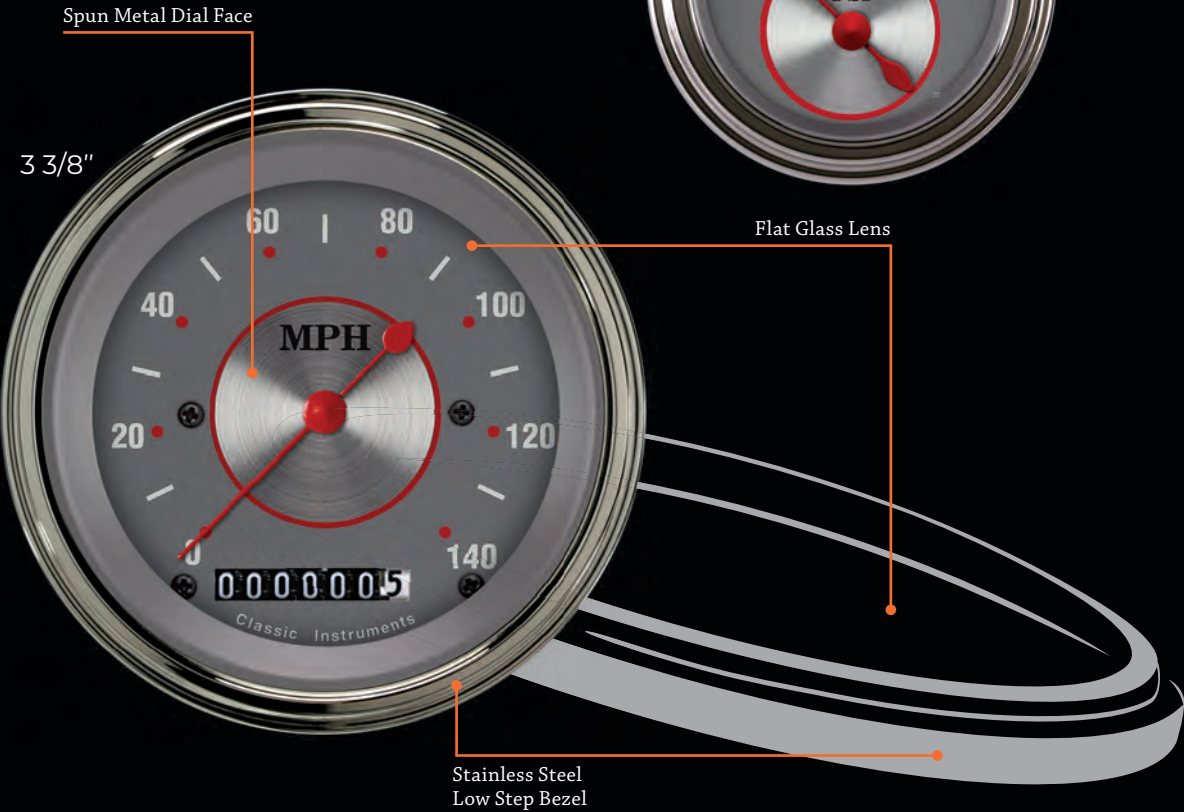
Silver™ Series

SOPHISTICATED STYLE

Available in five, & six gauge sets and individually.
Visit our website for product offering.



2 1/8"



3 3/8"

Spun Metal Dial Face

Flat Glass Lens

Stainless Steel
Low Step Bezel

Teardrop Pointer

Traditional™ Series

TRADITIONAL CLASS

Available in two, three, four, five, & six gauge sets and individually. Visit our website for product offering.

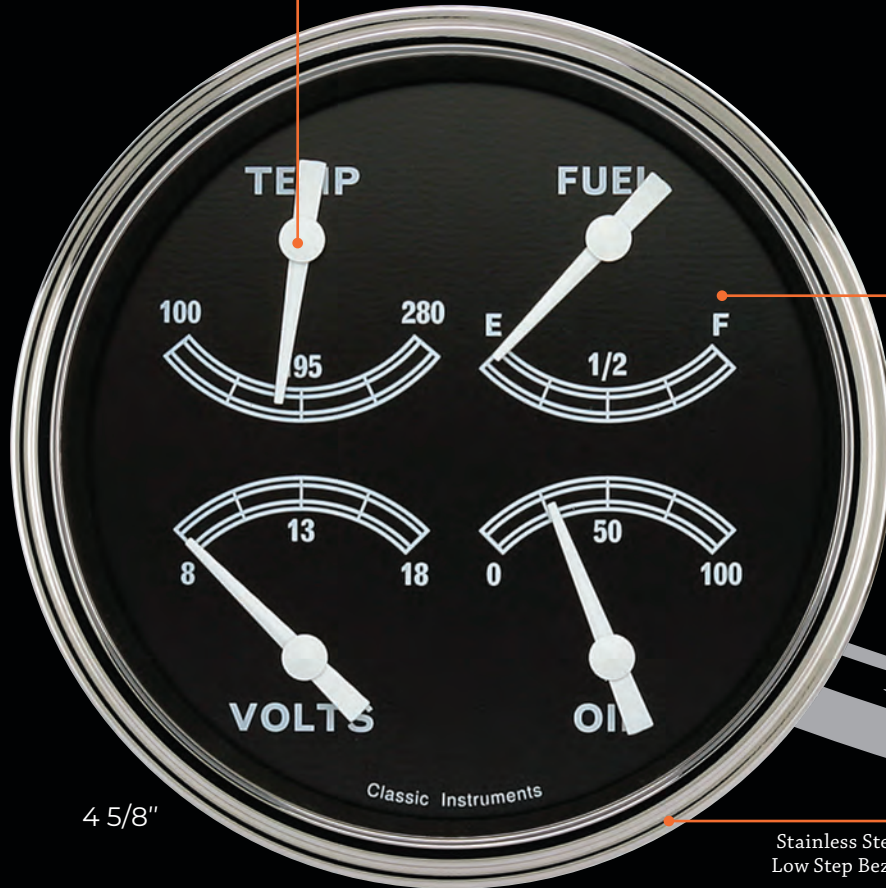


2 5/8"



2 1/8"

All combination gauges in this series use pool cue pointers



4 5/8"

Flat Glass Lens

Stainless Steel Low Step Bezel



3 3/8"



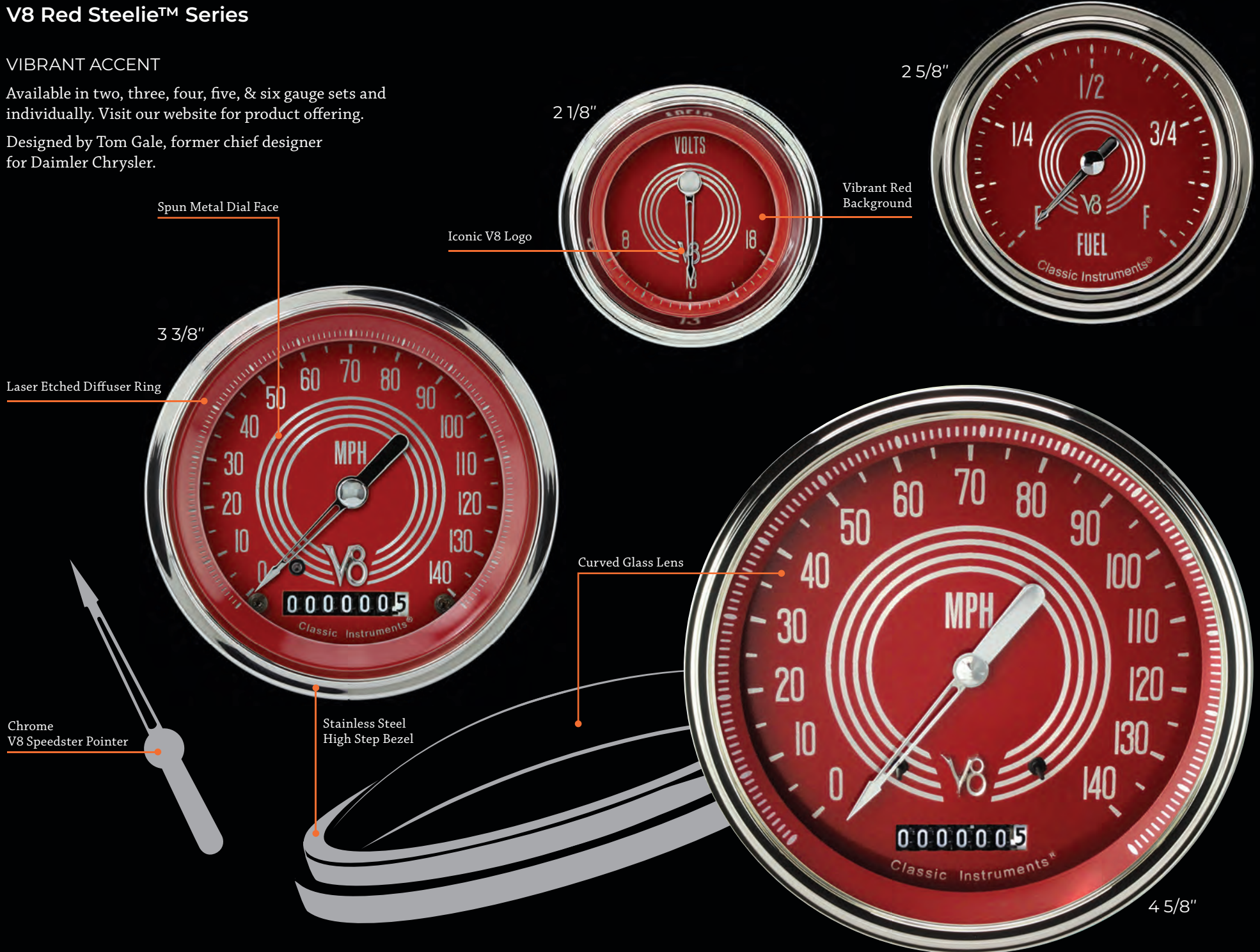
Crescent Moon Pointer

V8 Red Steelie™ Series

VIBRANT ACCENT

Available in two, three, four, five, & six gauge sets and individually. Visit our website for product offering.

Designed by Tom Gale, former chief designer for Daimler Chrysler.



Spun Metal Dial Face

2 1/8"

2 5/8"

Iconic V8 Logo

Vibrant Red Background

3 3/8"

Laser Etched Diffuser Ring

Curved Glass Lens

Chrome V8 Speedster Pointer

Stainless Steel High Step Bezel

4 5/8"

V8 Speedster™ Series

HISTORICAL TRIBUTE

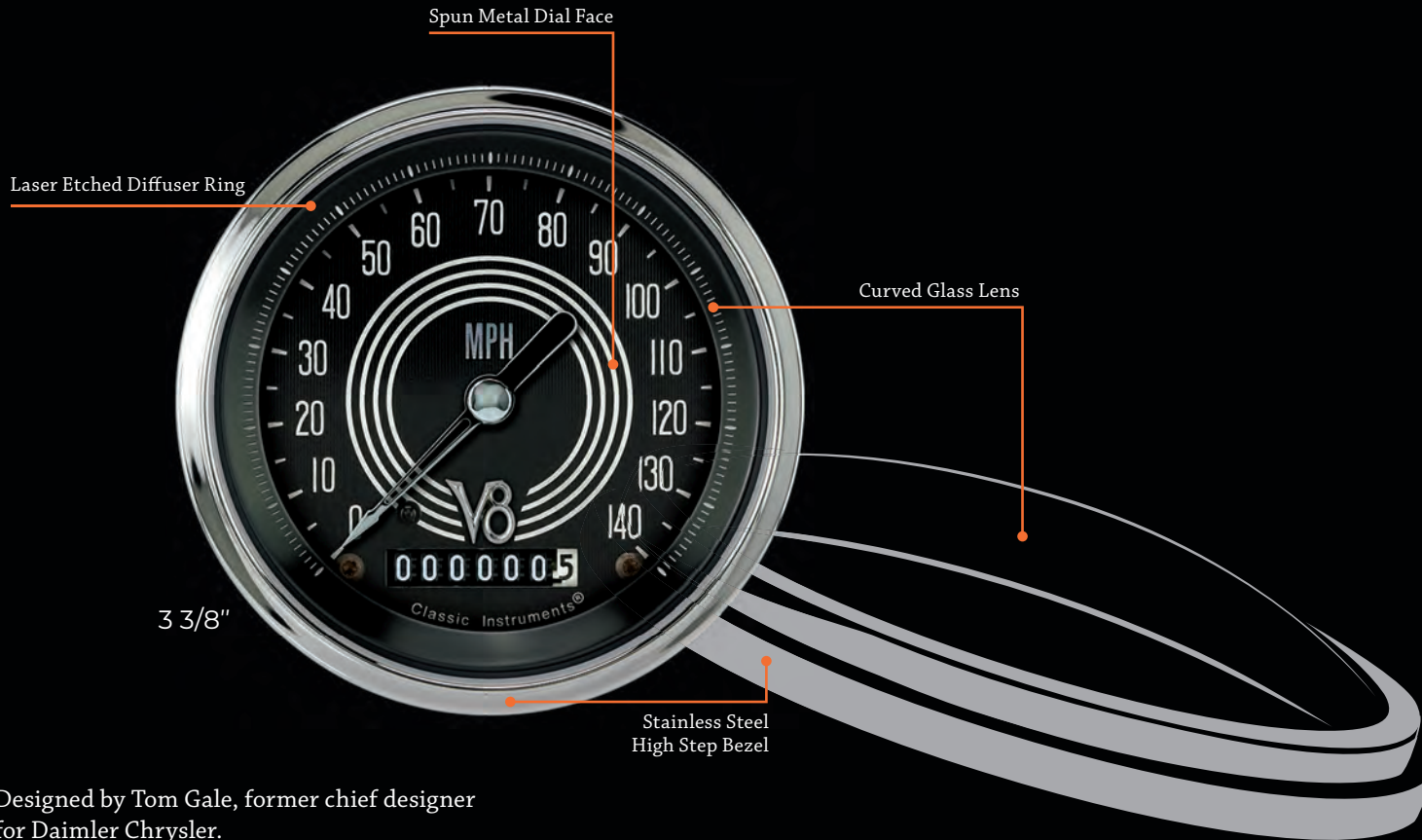
Available in five & six gauge sets and individually.
Visit our website for product offering.



2 5/8"



2 1/8"



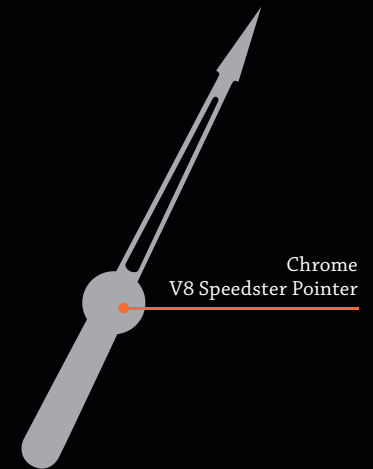
Spun Metal Dial Face

Laser Etched Diffuser Ring

Curved Glass Lens

3 3/8"

Stainless Steel High Step Bezel



Chrome V8 Speedster Pointer

Designed by Tom Gale, former chief designer for Daimler Chrysler.

Velocity™ Black Series

BOLD STATEMENT

Available in two, three, four, five, & six gauge sets and individually. Visit our website for product offering.

2 1/8"



2 5/8"



3 3/8"



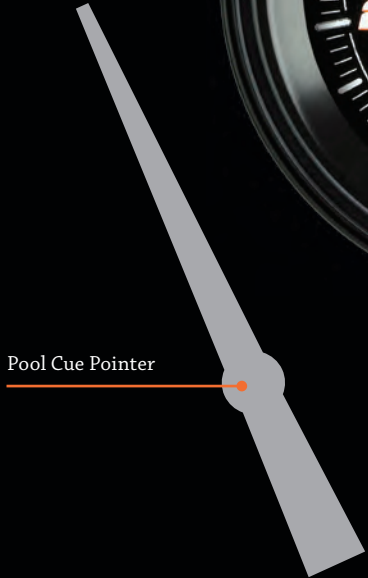
Flat Glass Lens



4 5/8"

Matte-Black
Low Step Bezel

Pool Cue Pointer



Velocity™ White Series

STAND-OUT STYLE

Available in two, three, four, five, & six gauge sets and individually. Visit our website for product offering.



Flat Glass Lens

Pool Cue Pointer

Matte-Black Low Step Bezel

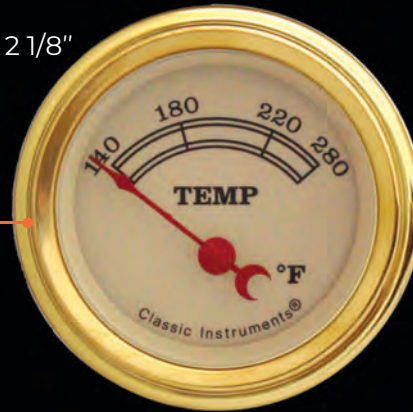
Vintage® Series

TRUE CLASSIC

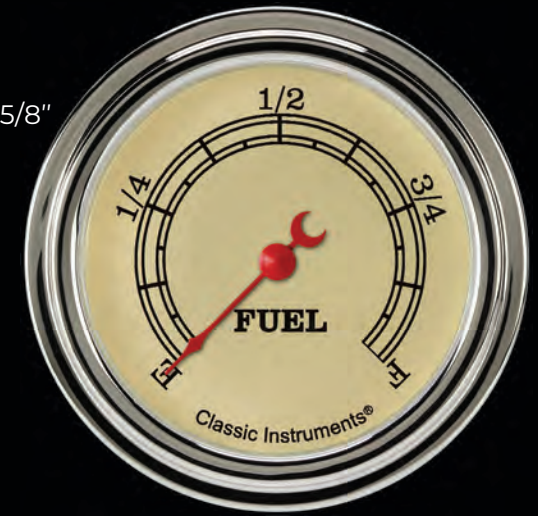
Available in two, three, four, five, & six gauge sets and individually. Visit our website for product offering.

2 1/8"

Optional Gold Bezels



2 5/8"

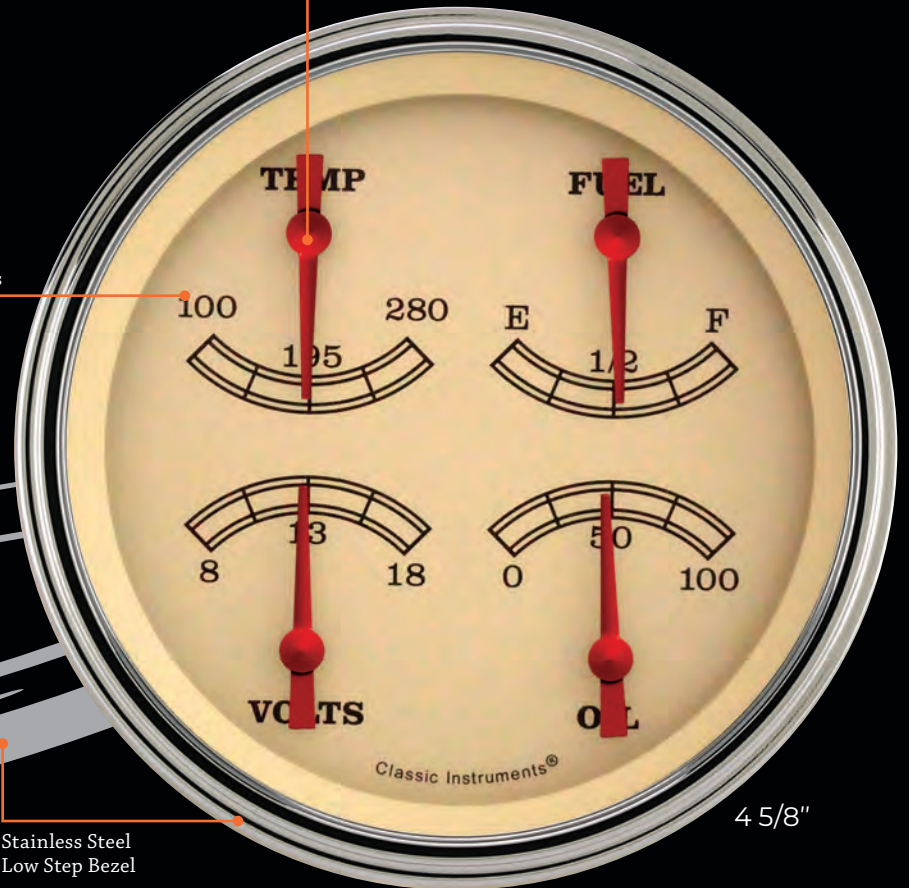


3 3/8"



All combination gauges in this series use pool cue pointers

Flat Glass Lens



4 5/8"

Stainless Steel Low Step Bezel

Crescent Moon Pointer



White Hot™ Series

CRYSTAL CLEAR

Available in two, three, four, five, & six gauge sets and individually. Visit our website for product offering.



Flat Glass Lens

Stainless Steel
Low Step Bezel

Pool Cue Pointer

So-Cal® Series

ICONIC

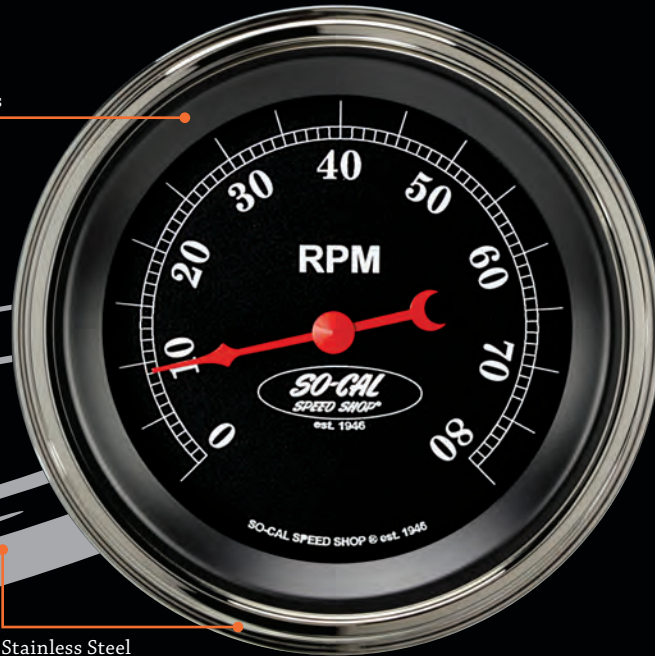
Available in five & six gauge sets and individually.
Visit our website for product offering.



2 1/8"



3 3/8"



Flat Glass Lens

Stainless Steel
Low Step Bezel

Crescent Moon Pointer

Combination & Auxiliary Instruments

BY INSTRUMENT TYPE

For a complete list of available styles and options for each instrument please visit our website.

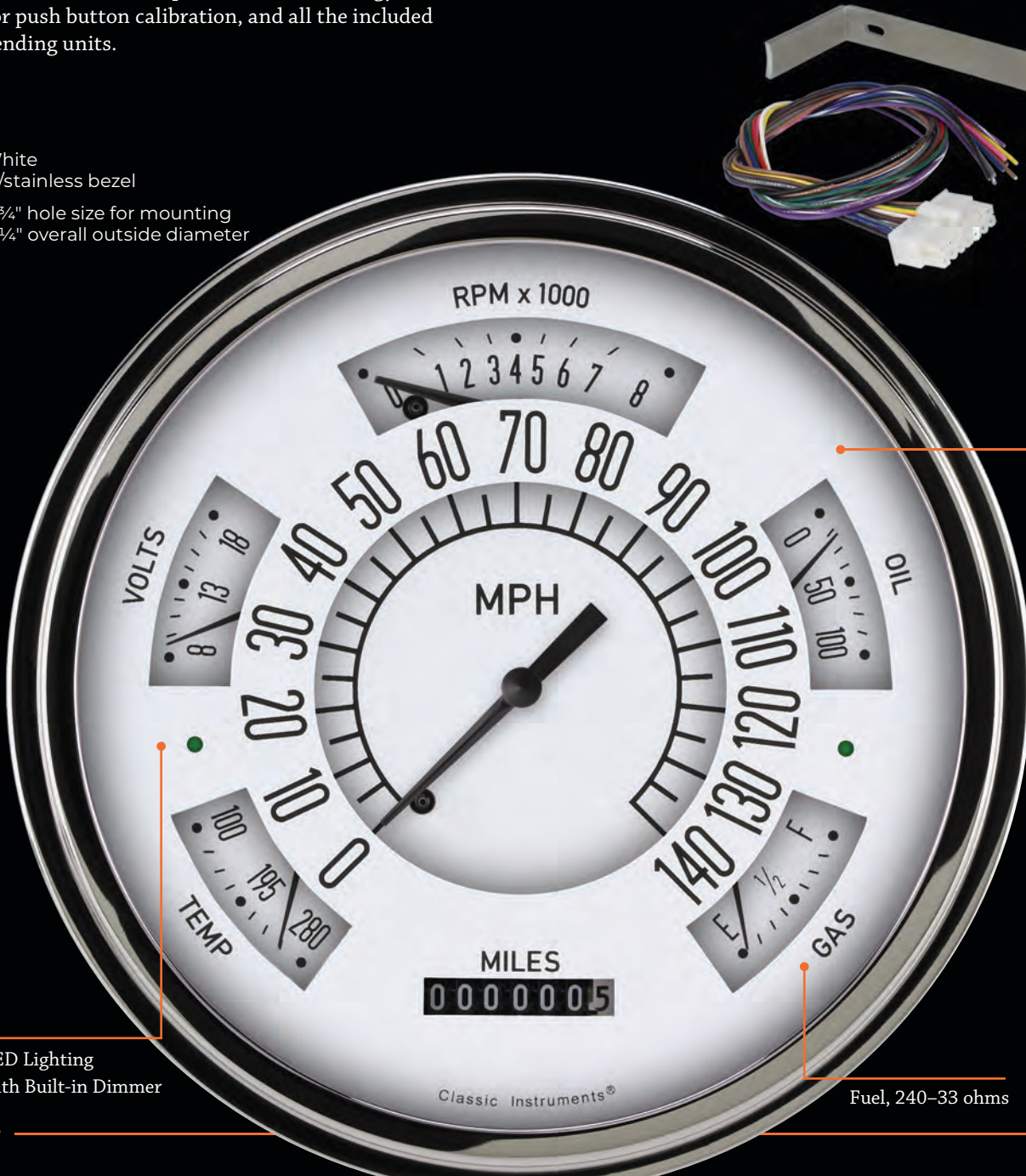
Remember, we can customize anything or mix and match for almost any application, just give us a call for options and pricing!

(800) 575.0461

6-Pack™

The 6-Pack is an all in one universal fit instrument. Installing the all electronic cluster is a breeze with a single harness connection in the back, Classic Instruments' Zeus Speedometer Technology for push button calibration, and all the included sending units.

White w/stainless bezel
 5 3/4" hole size for mounting
 6 1/4" overall outside diameter



Universal Mounting Hardware



Matching 2 5/8" Clock

Flat Glass Lens



Gray w/stainless bezel



Tan w/stainless bezel



Black w/stainless bezel

OPTIONAL MATTE BLACK BEZEL



Gray w/matte black bezel



Tan w/matte black bezel



Black w/matte black bezel

LED Lighting with Built-in Dimmer

Fuel, 240-33 ohms

All American™ Package

The All American Package is an all-in-one instrument panel featuring a uniquely machined bezel. The 3200 / 6400 package includes an electronic 140 MPH speedometer, fuel (240-33), volt, temp and oil gauges, LED high beam and turn signal indicators, LED illumination and the All American winged emblem. The 6400 includes an integrated 8,000 RPM tachometer. The bezel is available in a standard brushed finish which can be upgraded to a polished finish. The unit comes complete with all necessary sending units and mounting hardware. Package measures approximately 12 ¼" wide by 5" high.



All American Tradition
(Five Gauge Package)



All American Nickel
(Six Gauge Package)



All American
(Six Gauge Package)

All three styles are available in either the 5 gauge package, without the tach or the 6 gauge package with the tach.

Big Ol' Gauge (B.O.G.™)

The B.O.G. emulates the great design of classic, large, all-in-one gauges using modern components. The dual layer design comes completely assembled, including all necessary sending units and can be ordered to match your existing fuel sending unit.

Integrated Indicator Lights

Fuel, 240-33 ohms
Sending unit included

Curved Glass Lens

Nickel-Plated Bezel

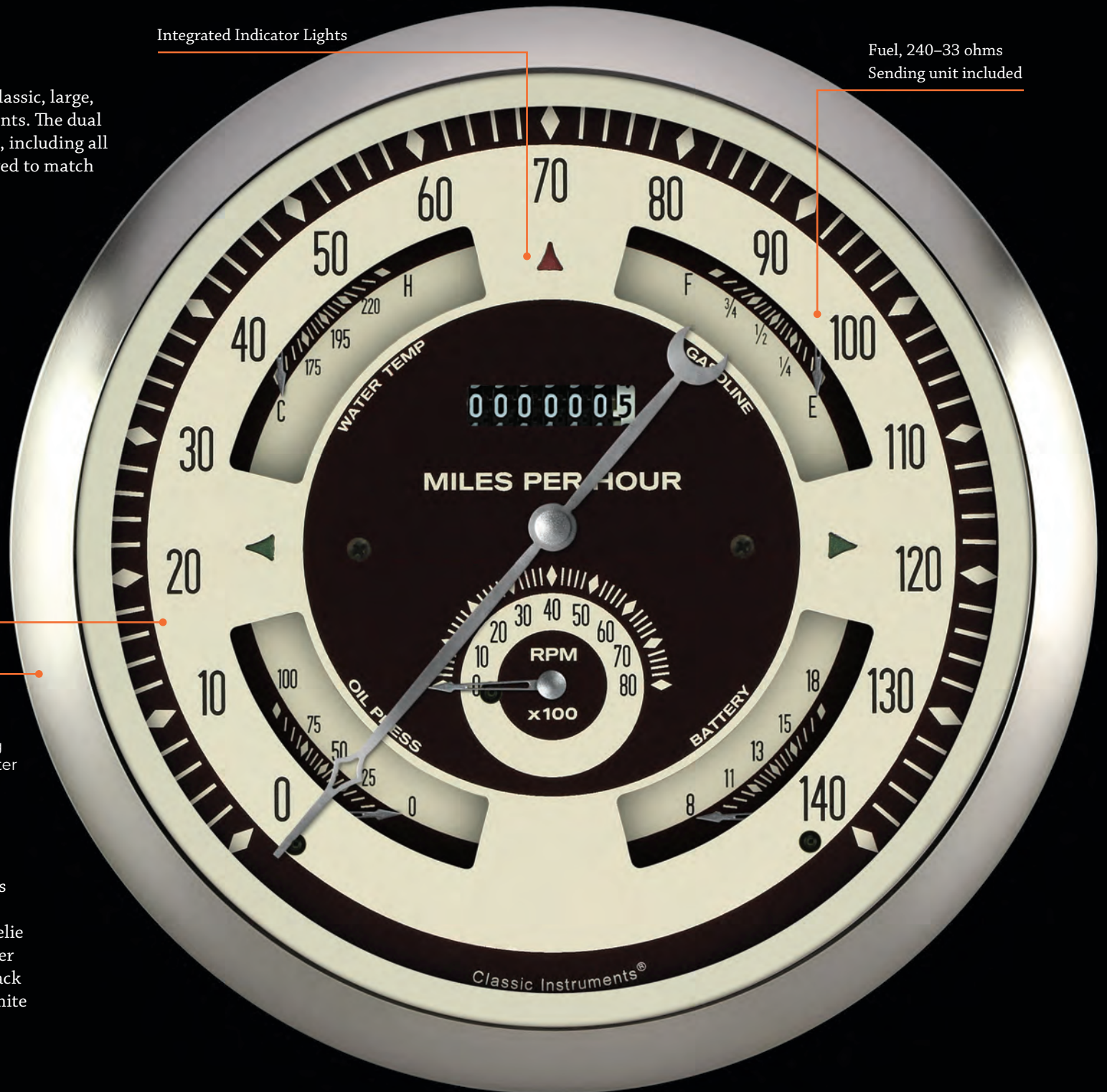
Nostalgia VT

7 5/8" hole size for mounting
7 7/8" overall outside diameter

AVAILABLE SERIES

All American Nickel
All American Tradition
All American
Classic White
G/Stock
Hot Rod
Nostalgia VT
SG Series

Silver Series
Traditional
V8 Red Stealie
V8 Speedster
Velocity Black
Velocity White
Vintage
White Hot



Duals & Quads

Duals and Quads offer you multiple instruments in one gauge, available separately or in sets. Choose from 3 3/8" Duals and 3 3/8" or 4 5/8" Quads. Multiple fuel ohm ranges are available on the quads to match your existing fuel sender ohm range.



4 5/8" Quad
Traditional Series

3 3/8" Quad
White Hot Series



3 3/8" Duals
G/Stock Series



- A. All American Nickel
- B. All American Tradition
- C. All American
- D. AutoCross Gray
- E. AutoCross Yellow
- F. Classic White
- G. G/Stock
- H. Hot Rod
- I. Nostalgia VT
- J. SC Series
- K. Traditional
- L. V8 Red Steelie
- M. Velocity Black
- N. Velocity White
- O. Vintage
- P. White Hot

Ultimate™ & Speedtacular™ Speedometers

The 3 3/8" Ultimate and 4 5/8" Speedtacular speedometers feature a built in tachometer so you get your vehicle's most vital information from one combined gauge. Both available in a variety of series, they are a great choice when dash space is limited. Consider pairing the Ultimate gauge with a pair of Dual gauges for a complete set of instrumentation, or choosing one of our pre-packaged sets using a Speedtacular and Quad!

- A. All American Nickel
- B. All American Tradition
- C. All American
- D. AutoCross Gray
- E. AutoCross Yellow
- F. Classic White
- G. G/Stock
- H. Hot Rod
- I. Nostalgia VT
- J. SG Series
- K. Traditional
- L. V8 Red Steelie
- M. Velocity Black
- N. Velocity White
- O. Vintage
- P. White Hot



4 5/8" Speedtacular
Hot Rod



3 3/8" Ultimate
Velocity White



Clocks

Classic Instruments clocks are great individually or as a complement to your existing set of gauges. They are available in a variety of series in 2 1/8", 2 5/8", or 3 3/8" sizes and use electronic quartz movements for accuracy. Each clock includes a push button reset knob for simplicity in changing or setting the time.

Hot Rod Series



Esquire™ 2 5/8" Clock



3 3/8" Clocks



Classic White

G/Stock

Nostalgia VT

SG Series

Traditional

V8 Red Steelie

Velocity Black

Velocity White

Vintage

White Hot

2 5/8" Clocks



All Am. Nickel

All Am. Tradition

All American

AutoCross Gray

AutoCross Yellow

Classic White

Classic Series

G/Stock

Nostalgia VT

SG Series

Traditional

Vintage

V8 Red Steelie

Velocity Black

Velocity White

White Hot

2 1/8" Clocks



All Am. Nickel

All Am. Tradition

All American

Classic White

G/Stock

Nostalgia VT

SG Series

Silver

Traditional

V8 Red Steelie

Velocity Black

Velocity White

Vintage

White Hot

Rocket Tach™



COLOR CHANGING
ROCKET BOOSTERS!



NORMAL DRIVING

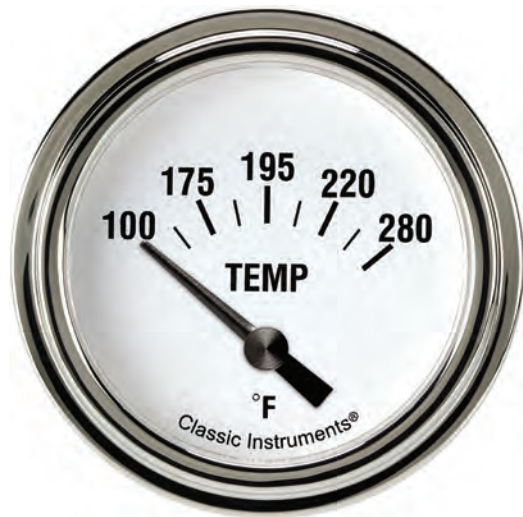


SPEEDING



BLAST OFF!

Take off with the Rocket Tach from Classic Instruments. The new half sweep tachometer features a dual layer design, color changing rocket booster, a red pointer, and a rich black face with bright white numerals and indices. Finished with a stainless low step bezel and flat glass the Rocket Tach comes installed in a chrome cup that allows for a variety of mounting positions. Stock calibrated for eight cylinder engines the Rocket Tach can be special ordered for other configurations. Great for completing that “retro” look with the latest electronic technology, the Classic Instruments Rocket Tach is truly a blast from the past. Vintage styled tube packaging included!



2 5/8"



INSTRUMENTS

- Fuel Level
- Gear Indicator
- Gear Indicator, Overdrive
- Oil Pressure
- Oil Temp.
- Transmission Temp.
- Volts
- Water Temp.

*Some instruments are only available in certain styles and sizes via a custom order. Visit our website for a complete list of availability.

SERIES

- All American
- All American Nickel
- All American Tradition
- AutoCross Gray™
- AutoCross Yellow™
- Classic White
- G/Stock™
- Hot Rod®
- Moal Bomber
- Nostalgia VT
- SG Series
- Traditional
- V8 Red Steelie
- V8 Speedster
- Velocity Black™
- Velocity White™
- Vintage
- White Hot™

Short-sweep Auxiliary Instruments

Our short-sweep auxiliary instruments are available in two sizes, 2 1/8" and 2 5/8". The rugged air core movements ensure long-lasting durability. Choose from dozens of styles for the perfect accent to your vehicle and pair them with a speedometer and tachometer for a finished dash.



2 1/8"



Full-sweep Auxiliary Instruments

Our full-sweep auxiliary instruments will cover every monitoring need with greater accuracy and reliability. The rugged air core movements ensure long-lasting durability. Choose from dozens of styles for the perfect accent to your vehicle.

INSTRUMENTS

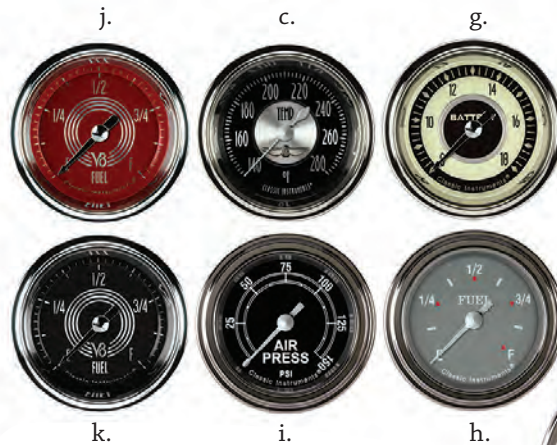
Air/Fuel Ratio
 Air Pressure, 150psi
 Boost, 30psi
 Boost 60psi
 Boost/Vac
 Cylinder Head Temp.
 Exhaust Gas Temp.
 Fuel Level
 Fuel Pressure, 100psi
 Fuel Pressure, 15psi
 Oil Pressure, 100psi
 Oil Temp.
 Outside Air Temp.
 Tachometer
 Transmission Temp.
 Volts
 Water Temp.

SERIES

a. All American
 b. All American Nickel
 c. All American Tradition
 d. Classic White
 e. Hot Rod
 f. Moal Bomber
 g. Nostalgia VT
 h. SG Series
 i. Traditional
 j. V8 Red Steelie
 k. V8 Speedster
 l. Vintage
 m. White Hot

FEATURES

All electric
 Two sizes 2 1/8" & 2 5/8"
 A rugged air core movement for durability
 Microprocessor technology for precision
 Push-button calibration
 An integrated red warning light
 An additional warning indicator light output
 Data logging compatibility
 LED lighting, choose between warm or cool white during installation
 Included installation hardware, wiring harness, and necessary sending unit
 A programmable resistance range on fuel gauges for compatibility with any fuel sending unit



SEVEN GRAPHIC STYLES

- a. AutoCross Gray™
- b. AutoCross Yellow™
- c. G/Stock™
- d. Hot Rod®
- e. Velocity Black™
- f. Velocity White™
- g. White Hot™



FEATURES

- A rugged air core movement for durability
- Microprocessor technology for precision
- Push-button calibration
- An integrated red warning light
- An additional warning indicator light output
- Data logging compatibility
- LED lighting, choose between warm or cool white during installation
- A programmable resistance range on fuel gauges for compatibility with any fuel sending unit
- h. Our optional Performance Bezel has a taller, contoured profile designed with racing in mind. Available on all 2 5/8" gauges only. Also available in Brushed Aluminum.



Complete your dash with a 5 or 6 gauges set!

Available in all seven series, with 3 3/8" or 4 5/8" speedometer and tachometer.

All necessary sending units are included with each set



Six Gauges
4 5/8" Speedometer & Tach
2 5/8" Fuel, Oil, Temp, Volts part no. GS301SLF

Don't Forget!

We offer custom graphic services too! You can change the color, add your logo, or completely customize the graphics with ease. For a complete list of gauges and sets please visit our website.

Special Applications

LOW SPEED

The Low Speed series offers the great looks and functionality of the Classic Instruments line in a 60 MPH speedometer. Consider this line for use in your boat, golf cart, ATV, or any other low speed creation. The Sky-Drive GPS speedometer sending unit is necessary when using the Low Speed series line of gauges.

MARINE

You may be surprised to find Classic Instruments used by some of the top marine builders and restorers such as Hacker Craft, Van Dam Custom Boats, and Stancraft. They are built with corrosion resistant electrical components and specially sealed in vented cases to minimize fogging. Marine gauges are available in any series or can be custom designed to create that perfect look!



Sky-Drive™ GPS speedometer sending unit.



SALT FLAT

The Salt Flat Special gauges let you know when your target speed is reached by lighting up red. The red indicator light is adjustable for any target speed. The 270 MPH gauges are available in two sizes, 3 3/8" and 4 5/8". The gauge face is decked out in our Velocity White series for easy readability without compromising on style.

Don't Forget!

We offer custom services too. If you have a special application or unique gauge that you would like to have custom built, our Instrument Customization Unit is ready to help. Just give us a call!

(800) 575.0461





Custom & Retro-fit™ Design Services

Don't see the perfect set for your latest build? Give us a call and let our I.C.U. create the perfect instruments.

[\(800\) 575.0461](tel:8005750461)

Custom Design Services

Only Classic Instruments offers you the option to customize any gauge, any way you want. If you want more than just a change of bezels, glass, pointers and diffusers from our standard production gauges, the Classic Custom Team is here for you. With Classic custom gauges you can change colors, add logos, or have a completely unique concept built from the ground up!

Custom gauges are priced on an individual basis and prices vary depending on the complexity of the design and nature of the work. You may be surprised to learn how affordable it is to make your personal gauge concept a reality.

The top automotive builders in the industry know where to go to get a great looking product and unmatched customer service.

Give us a call to get started.

(800) 575.0461

"Consistent quality and exceptional customer service are a must for a busy shop. Customers for our cars demand the very finest components and craftsmanship and Classic helps us deliver."

*-Bobby Alloway
Alloway's Hot Rods*





"We build only one off cars and when it comes to choosing instrumentation we rely on the team at Classic Instruments"

-Mike & Jim Ring, Ringbrothers



Retro-fit™ Design Services

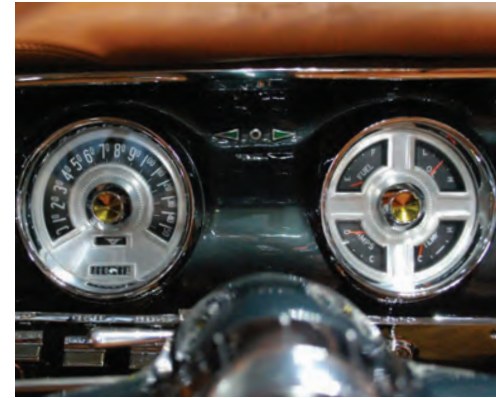
Classic Instruments' Retro-fit™ department specializes in completely updating original instrument panels by fitting new electronic movements into the original stock housing. Through the retrofit process, you can maintain the nostalgic look of the original equipment or customize the graphics to work with your custom project. The retrofit process incorporates the latest technology to provide maximum accuracy and reliability.

Retro-fit™ gauges are priced on an individual basis and prices vary depending on the complexity of the design and nature of the work. You may be surprised to learn how affordably you can make your personal gauge concept a reality.

The top automotive builders in the industry know where to go to get a great looking product and unmatched customer service.

Give us a call to get started.

800.575.0461



"Barry Lobeck was an inspiration for me and gave me plenty of guidance, you always knew where he stood and he will never be forgotten at Classic Instruments. Godspeed Barry!"

-John D. McLeod III

"Instruments are as important to us as any other part of the car and we only use the best quality products available! Classic fits our requirements every time and the choices of design options is a bonus for us and our customers."

-Barry Lobeck 1950 - 2011, Lobeck's V8 Shop



“Rad Rides always thinks outside the box when it comes to design and engineering our next project car. Classic Instruments has the same ability. They are able to take our unique designs for instrument clusters and make them not only look unique but perform the functions that they represent in the dash. As a team, Rad Rides & Classic Instruments have left the industry spellbound by their attention to detail and performance.”

-Troy Trepanier
Rad Rides by Troy





Direct-fit Packages

BY YEAR & MODEL

For a complete list of available styles and options for each package please visit our website. Don't see an option that fits your plan? Give us a call to discuss customization options!

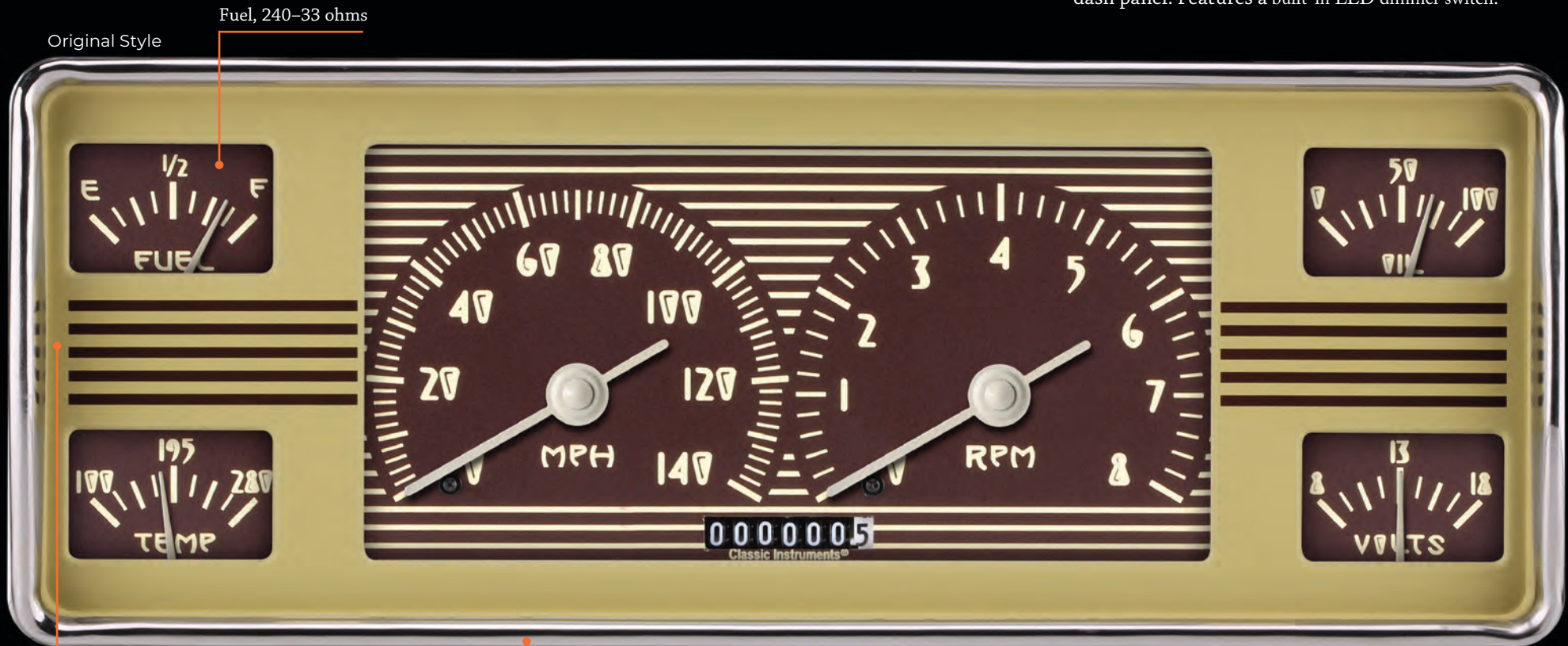
(800) 575.0461

AVAILABLE STYLES, TOP-BOTTOM, LEFT-RIGHT

- | | | |
|------------------------|----------------|----------------|
| All American | Hot Rod | Velocity White |
| All American Nickel | Moal Bomber | Vintage |
| All American Tradition | Nostalgia VT | White Hot |
| AutoCross Gray | SG Series | |
| AutoCross Yellow | Traditional | |
| Classic White | V8 Red Steelie | |
| G/Stock | Velocity Black | |

1940 Ford Package

Add the finishing touch to your version of one of America's most iconic hot rods, the 1940 Ford. Classic Instruments' 1940 Ford direct fit package combines all the style, functionality, and convenience into one complete product that is ready to install into your stock dash panel. Features a built-in LED dimmer switch.

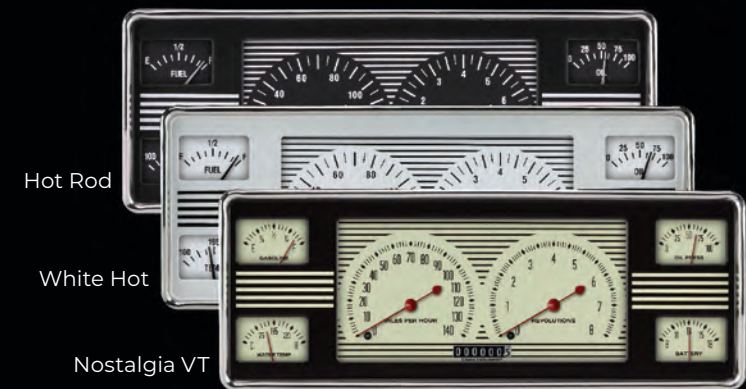


Original Style

Fuel, 240-33 ohms

Halo™ turn signals illuminate green on the left and right sides of the cluster, red high beam illuminates the top

Polished stainless steel bezel



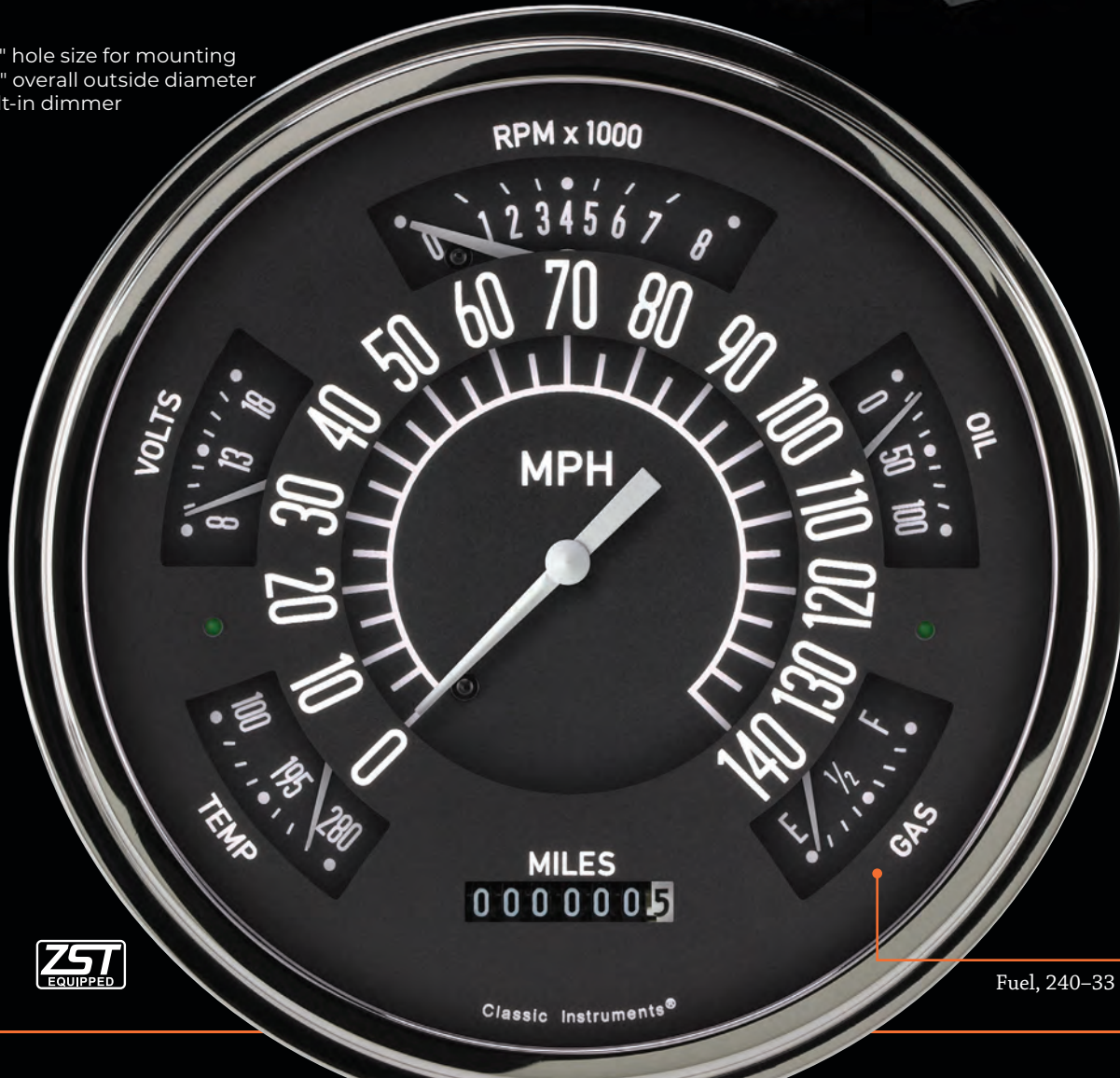
1949 - '50 Ford Car Package

The Shoebox package is a replacement cluster made to drop in your stock '49 -'50 Ford dash. It features the Speedometer, Tachometer, Fuel, Temperature, Volt, and Oil gauges in one cluster. Installing the all electronic cluster is a breeze with a single harness connection in the back, Classic Instruments' patented Zeus Speedometer Technology for push button calibration, and all the included sending units.



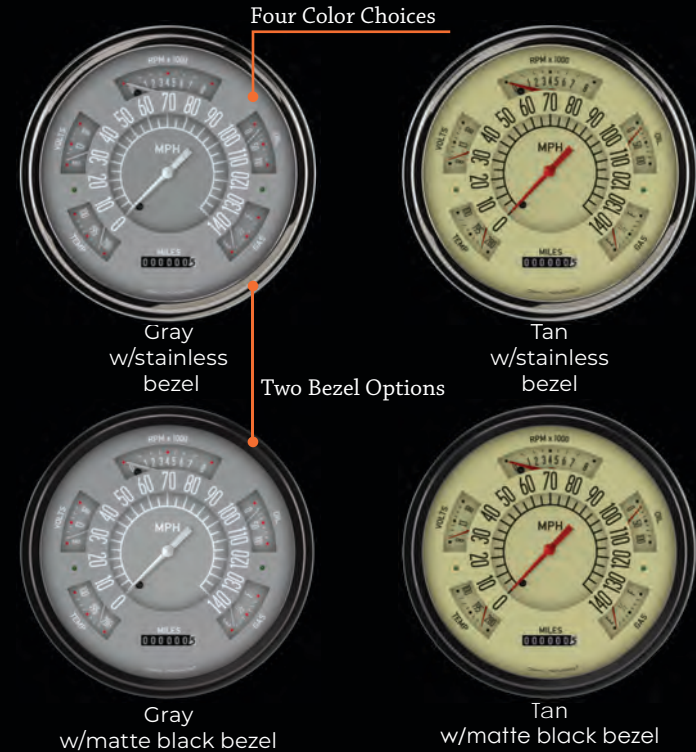
Model Specific Hardware

5 3/4" hole size for mounting
6 1/4" overall outside diameter
Built-in dimmer



Classic Instruments®

Fuel, 240-33 ohms



Four Color Choices

Two Bezel Options

Gray w/stainless bezel

Tan w/stainless bezel

Gray w/matte black bezel

Tan w/matte black bezel

1949 – '50 Chevy Car Package

The ClassicLine package from Classic Instruments is an instrument cluster kit to work in the opening of your stock '49 –'50 Chevy dash. Installing the all electronic cluster is a breeze with the included wiring pigtail, calibration button, "you-paint-to-match" adapter ring, and a bracket to mount the cluster to the dash trim studs. All the necessary sending units are also included.



Model Specific Hardware



White
w/stainless
bezel



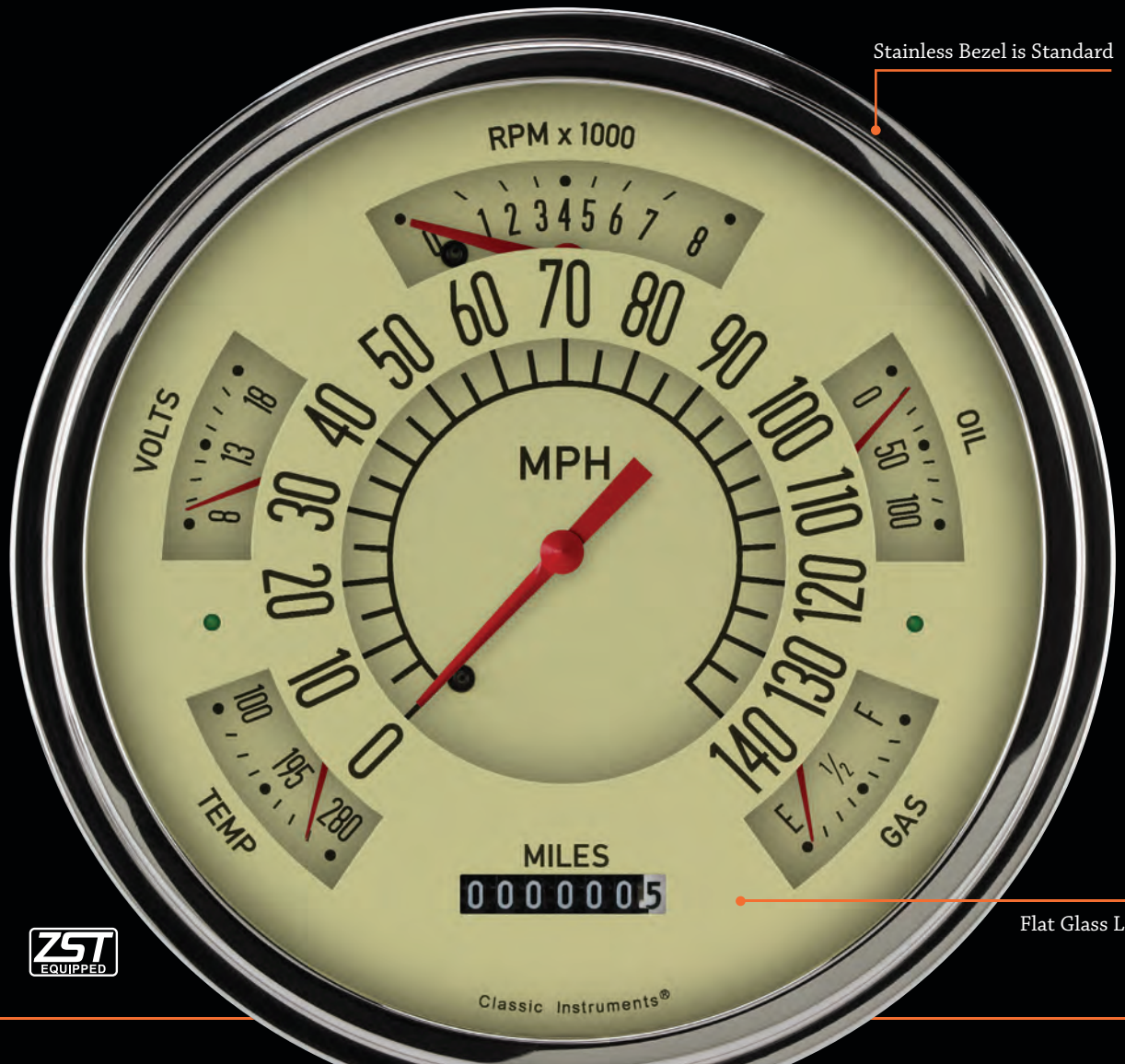
Black
w/stainless
bezel



White
w/matte black bezel



Black
w/matte black bezel



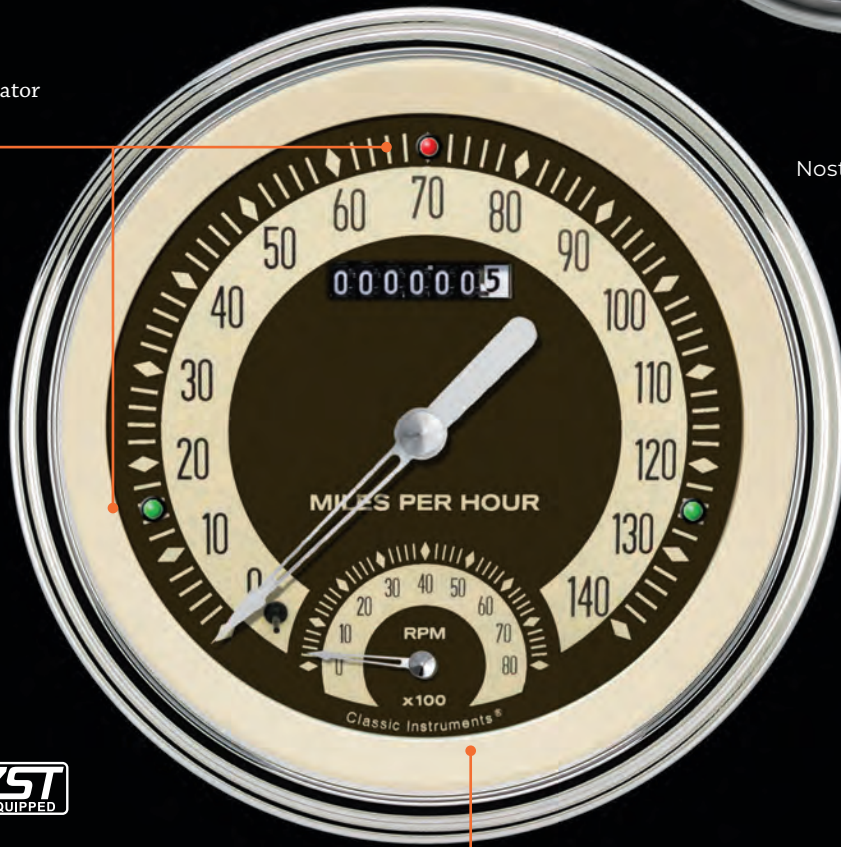
Stainless Bezel is Standard

Flat Glass Lens

1951 - '52 Chevy Car Package

The 1951-'52 Chevy Car Package features a Quad gauge and your choice of a speedometer or Speedtachular in any series. The set includes all necessary sending units.

LED high beam indicator and turn signals



AVAILABLE SERIES

All American Nickel
 All American Tradition
 All American
 AutoCross Gray
 AutoCross Yellow
 Classic White
 G/Stock
 Hot Rod

Nostalgia VT
 SG Series
 Traditional
 V8 Red Steelie
 Velocity Black
 Velocity White
 Vintage
 White Hot

Classic Instruments' Speedtachular is a 4 5/8" speedometer and tachometer combination gauge



Model Specific Hardware

Fuel, stock 0-30 ohms, sending unit not included

Nostalgia VT



Classic Instruments®

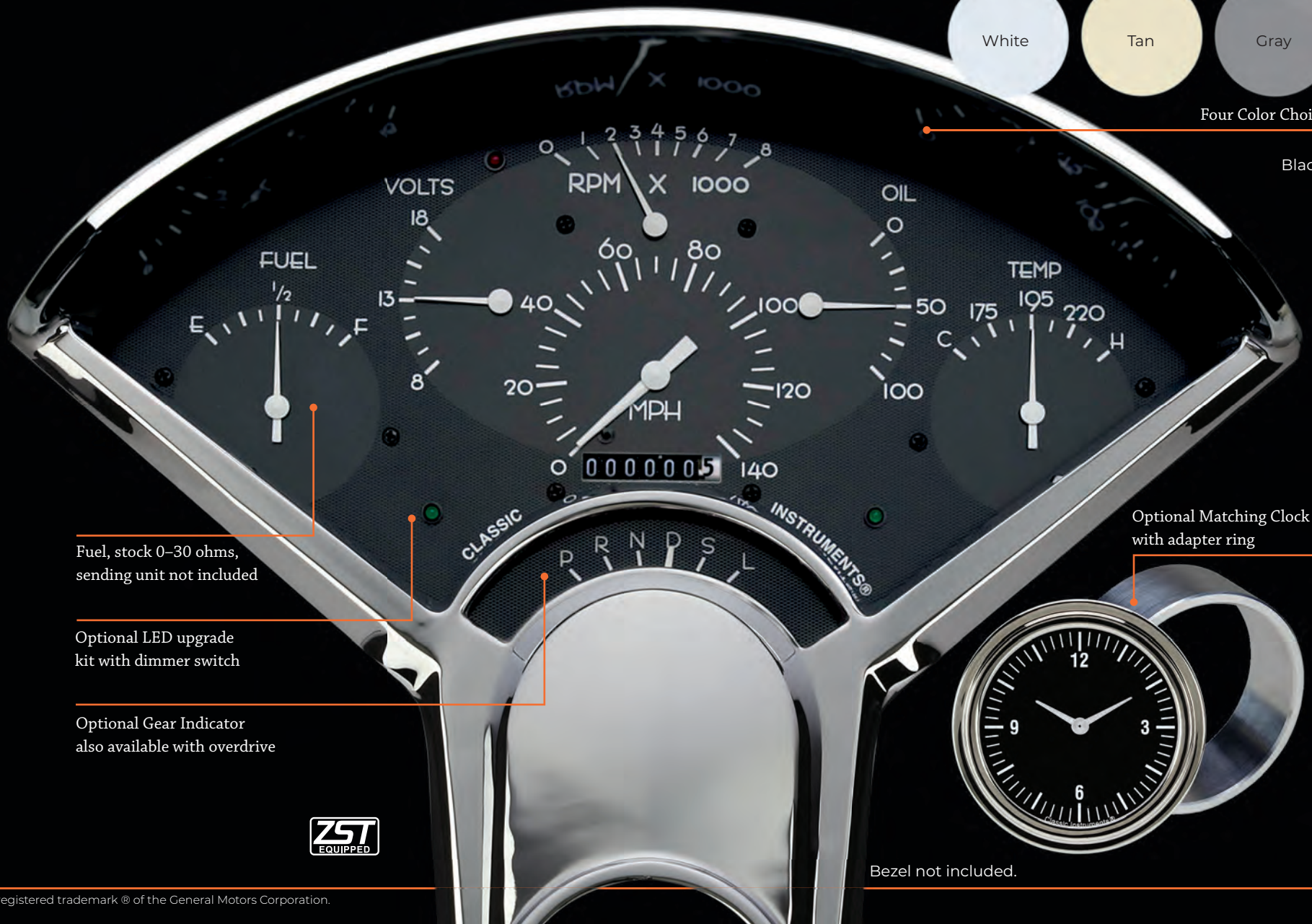
Bel Era™ 1955 – '56 Chevy Package

The Bel Era package from Classic Instruments is the ideal combination of looks and functionality for your 1955-'56 Chevy. This unit is completely assembled and ready to install into your existing bezel with all necessary sending units, wiring harness, and installation hardware.



Four Color Choices

Black



Fuel, stock 0-30 ohms, sending unit not included

Optional LED upgrade kit with dimmer switch

Optional Gear Indicator also available with overdrive

Optional Matching Clock with adapter ring

Bezel not included.



Bel Era II™ 1955 – '56 Chevy Package

The Bel Era II package features a nostalgic dual layer design combined with LED illumination, integrated LED turn signals, and a blue Halo high beam indicator. This unit is completely assembled and ready to install into your existing bezel with all necessary sending units, wiring harness, and installation hardware.



Tan
White
Black
Four Color Choices

Gray

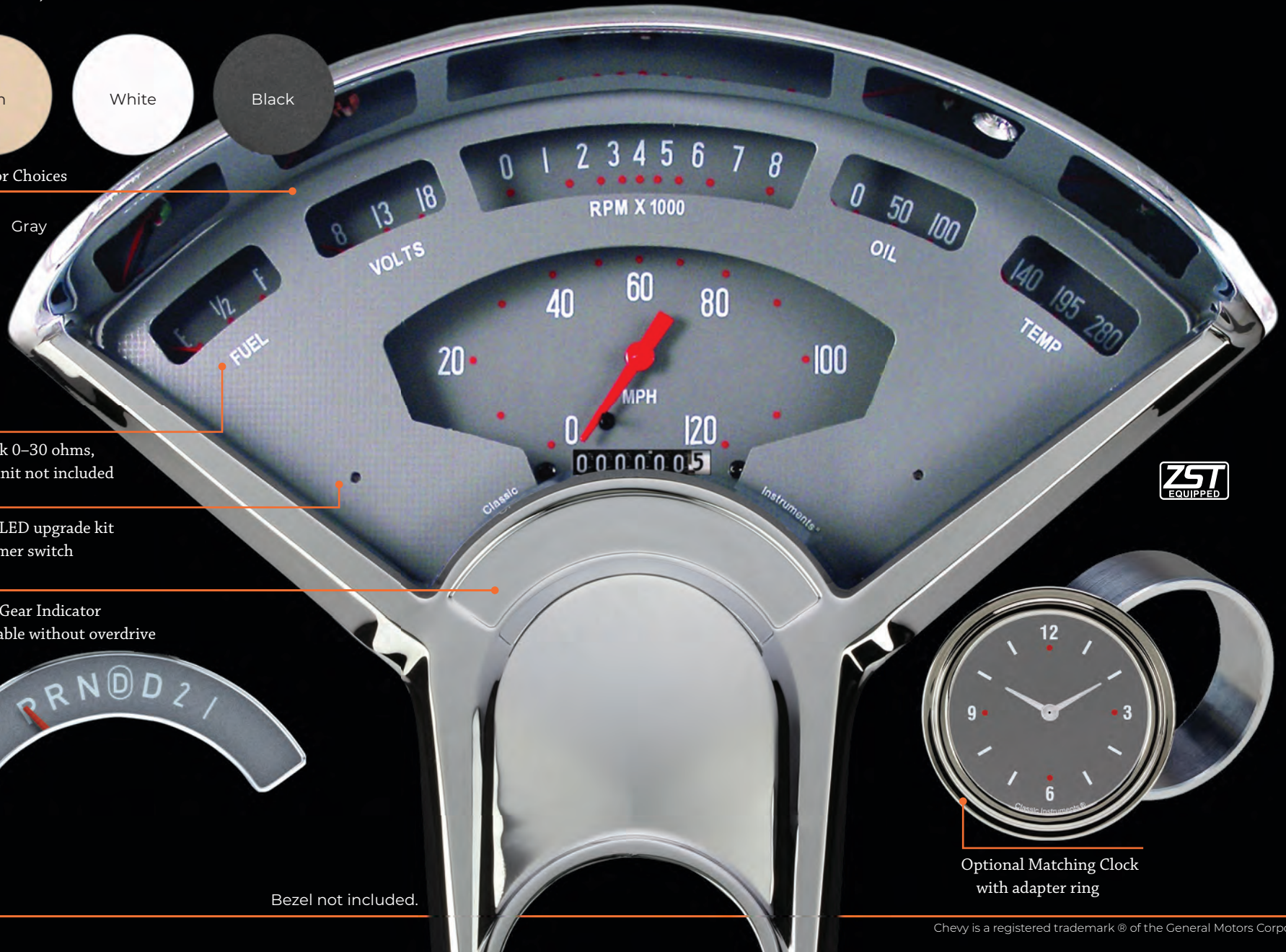
Fuel, stock 0–30 ohms, sending unit not included

Optional LED upgrade kit with dimmer switch

Optional Gear Indicator also available without overdrive



Bezel not included.



Optional Matching Clock with adapter ring

Bel Era III™ 1955 – '56 Chevy Package

The Bel Era III package features a nostalgic dual layer design combined with LED illumination, integrated LED turn signals and warning indicators. This unit is completely assembled and ready to install into your existing bezel with all necessary sending units, wiring harness, and installation hardware.

Fuel sender selector switch, allows for compatibility with any fuel sending unit



Four Color Choices

Tan



Includes Glass Replacement Lens

Optional Gear Indicator also available without overdrive

Optional Matching Clock with adapter ring

Bezel not included.

'57 Chevy Package & Tetra™ Series

The '57 Chevy Package features five different styles. The package includes model specific mounting brackets, electrical connections, and necessary sending units.



Five Color Choices



Fuel, stock 0–30 ohms, sending unit not included



Optional '57 Chevy matching clock

Dash housing not included.



Want the '57 Chevy look for any hot rod application? Use the Tetra Series; identical to the '57 Chevy Package with the exception of a 240–33 ohm fuel sender.



Upgrade the speedometer to a Speedtachular™

V8 Red Steelie



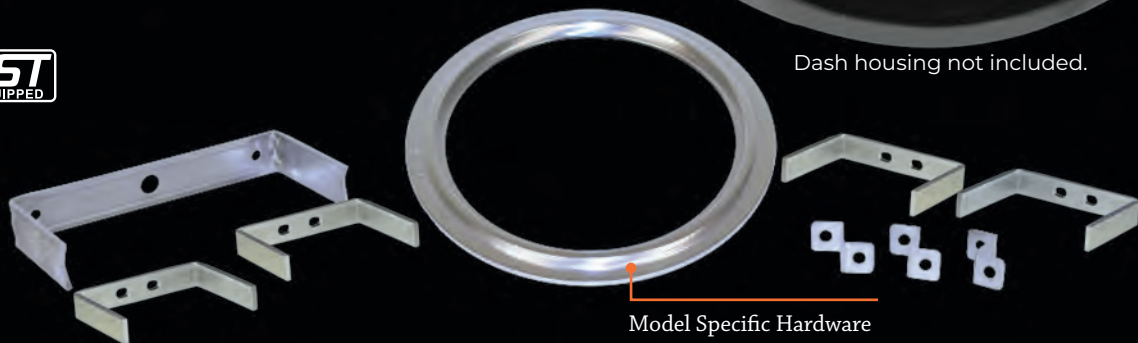
Dash housing not included.



Fuel, stock 0-30 ohms, sending unit not included

1959 – '60 Full Size Chevy Package

The 1959-'60 Full Size Chevy Package features a 4 5/8" speedometer, upgradable to Speedtachular (speedometer & tachometer combo), with red LED high beam and green turn signal indicators mounted in the face. The package comes complete with all necessary sending units, mounting hardware, and model specific adapter rings for installation into your existing stock dash panel. Fits 1959-'60 Bel Air, El Camino, and Impala!



Model Specific Hardware

AVAILABLE SERIES

All American Nickel
 All American Tradition
 All American
 AutoCross Gray
 AutoCross Yellow
 Classic White
 G/Stock
 Hot Rod

Nostalgia VT
 SG Series
 Traditional
 V8 Red Steelie
 Velocity Black
 Velocity White
 Vintage
 White Hot

1963 - '65 Nova Package

The 1963-'65 Nova Package is a great addition to your classic Nova project. It comes ready to install into your existing bezel with a new lens, wiring harness, and all necessary sending units.

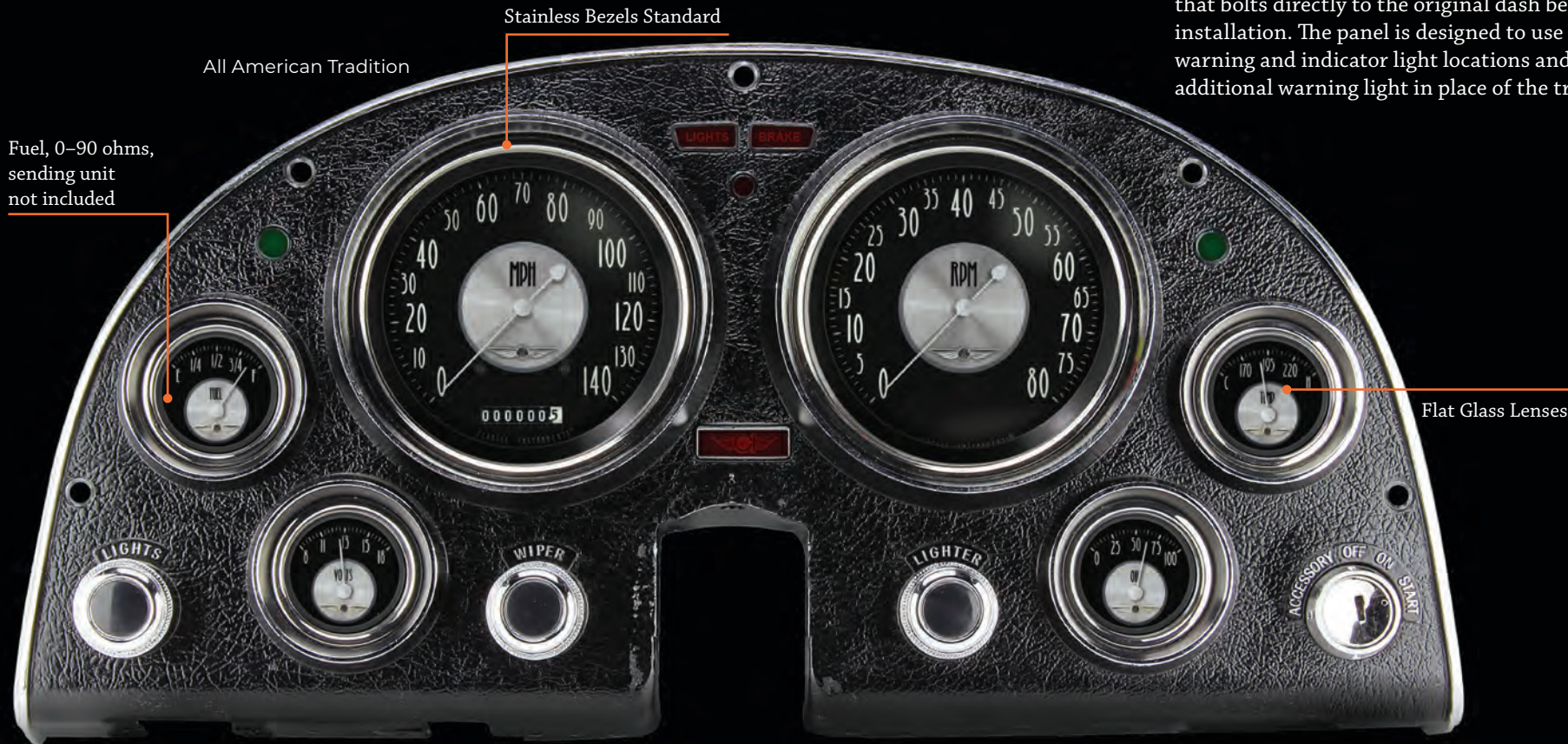


AVAILABLE SERIES

- G/Stock
- Hot Rod
- SG Series
- Traditional
- Velocity Black
- Velocity White
- White Hot

1963 – '67 Corvette Package

Classic Instruments' 1963-'67 Corvette direct fit package is the perfect way to upgrade the interior of your classic 'Vette! The package is designed to operate with any original equipment or modern engine and transmission combination or ECU. The gauges come mounted in a precision machined adapter panel that bolts directly to the original dash bezel for easy installation. The panel is designed to use the original warning and indicator light locations and includes an additional warning light in place of the trip odometer.



All American Tradition

Stainless Bezels Standard

Fuel, 0-90 ohms,
sending unit
not included

Flat Glass Lenses

Dash bezel not included

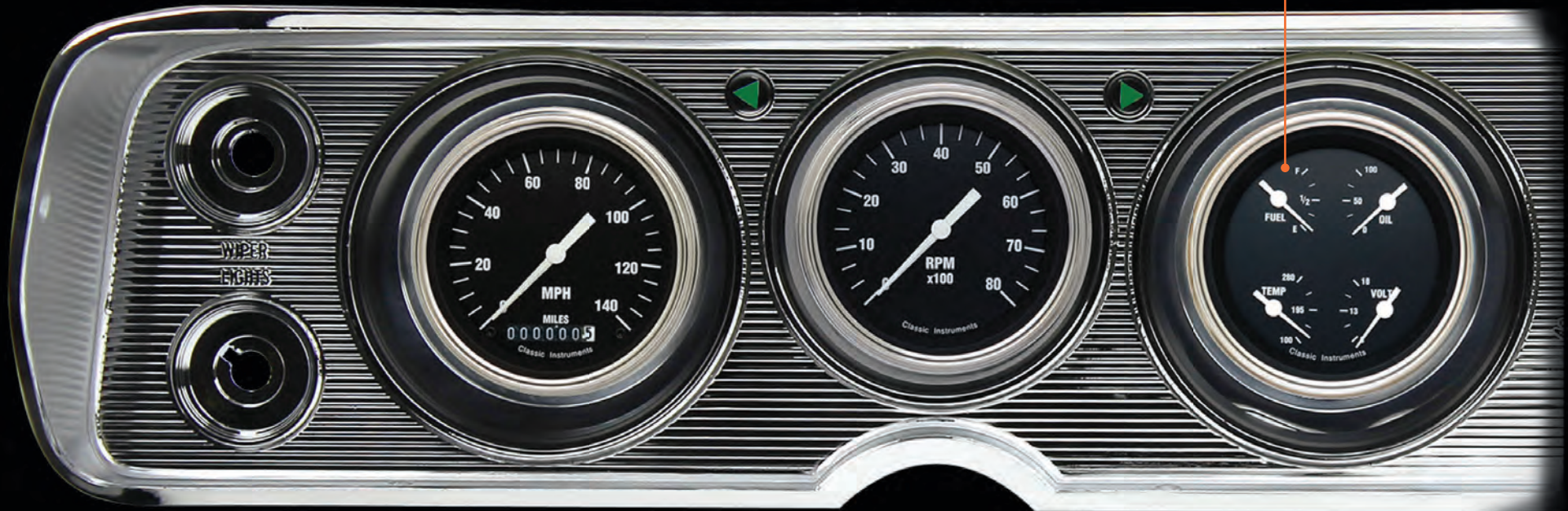
AVAILABLE SERIES

All American Nickel	Nostalgia VT
All American Tradition	SG Series
All American	Traditional
AutoCross Gray	V8 Red Stealie
AutoCross Yellow	Velocity Black
Classic White	Velocity White
G/Stock	Vintage
Hot Rod	White Hot



1964 - '65 Chevelle Package

The 1964-'65 Chevelle Package includes a blue Halo high beam indicator, and arrives ready to install into your existing dash bezel using the included adapter panel. Mounting hardware, wiring harness, and all necessary sending units are included. This set is a great way to upgrade the interior of your classic Chevelle.



Fuel, stock 0-30 ohms,
sending unit not included

Bezel not included

Hot Rod®

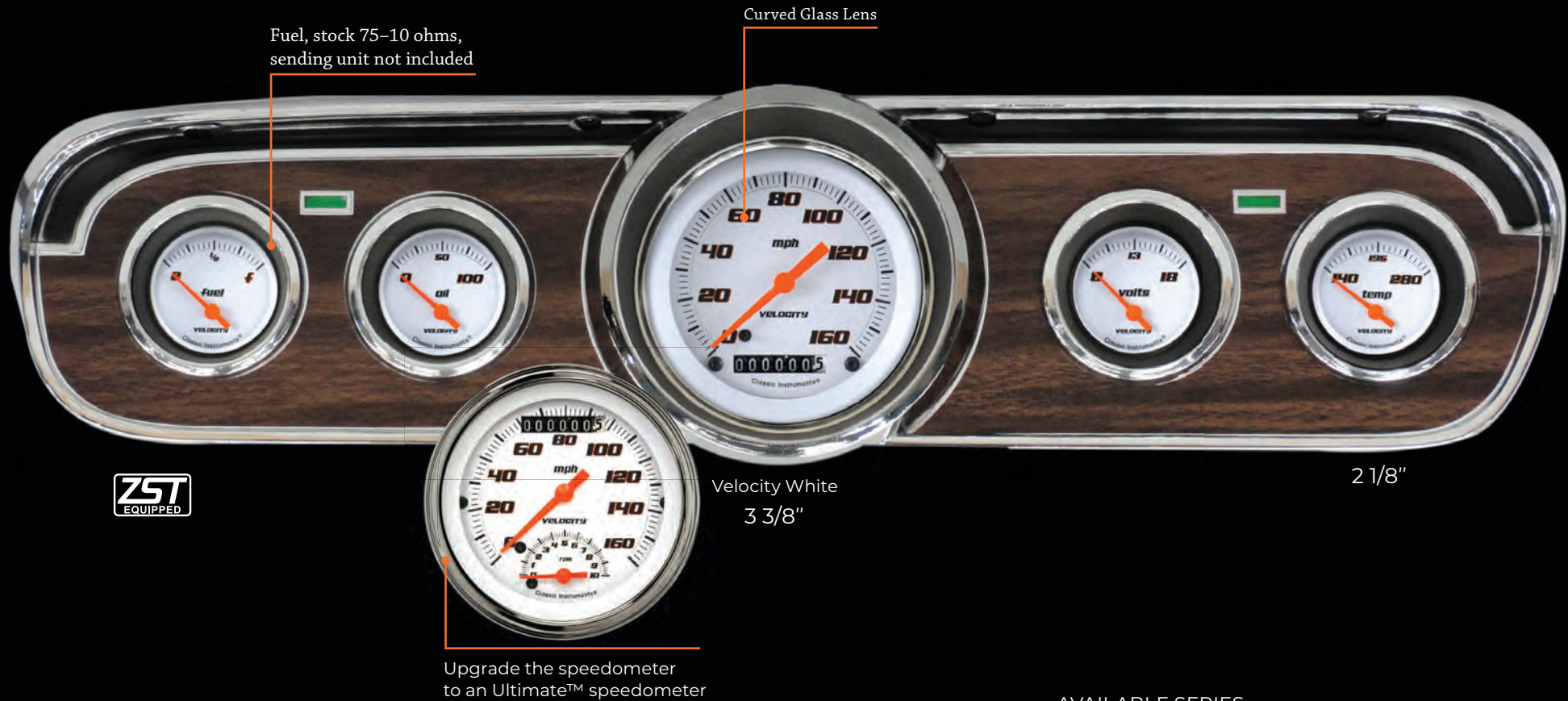


AVAILABLE SERIES

All American Nickel	Nostalgia VT
All American Tradition	SG Series
All American	Traditional
AutoCross Gray	V8 Red Steelie
AutoCross Yellow	Velocity Black
Classic White	Velocity White
G/Stock	Vintage
Hot Rod	White Hot

1965 – '66 Mustang Package

Update the interior of your classic 1965-'66 Mustang with your favorite series of gauges from Classic Instruments. The set includes a red Halo high beam indicator, necessary sending units, turn signal bulbs, and a gauge mounting bracket designed to work with your existing stock or reproduction bezel. Bezel not included.



Fuel, stock 75-10 ohms,
sending unit not included

Curved Glass Lens

ZST
EQUIPPED

Velocity White
3 3/8"

2 1/8"

Upgrade the speedometer
to an Ultimate™ speedometer

AVAILABLE SERIES

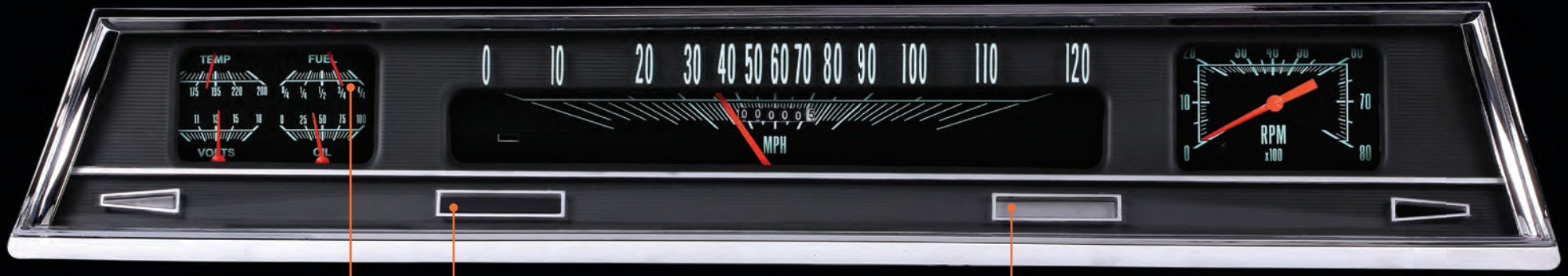
All American Nickel*	Traditional
All American Tradition*	Velocity Black
All American*	Velocity White
Classic White	Vintage
G/Stock	White Hot
Hot Rod	
Nostalgia VT	
SG Series	

*Ultimate™ Speedometer call for custom pricing

1966 - '67 Chevelle Package

This direct-fit cluster is all-electric and designed for a seamless fit into your existing 66-'67 Chevelle or 66-'67 El Camino dash. It arrives ready to install with the dash bezel and all the necessary sending units and installation is a breeze with the snap-in wire harness. Additionally, Classic Instruments' ZST™ is built right into the cluster eliminating the need for external control boxes.

G/Stock



Fuel sender selector switch on the back of the cluster allows for compatibility with any existing fuel sending unit. Fuel sending unit not included

Built-in, programmable warning light

Built-in, adjustable shift light



Black



Gray

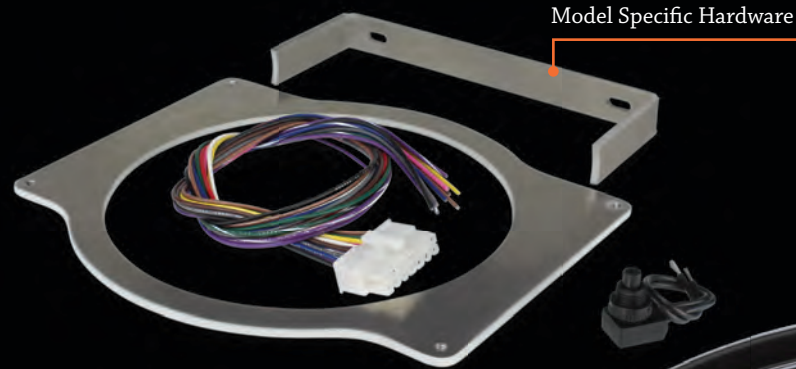


Velocity Black



1966 - '77 Ford Bronco Package

The '66-'77 Ford Bronco Package is an all in-one-direct fit instrument. Installing the all-electronic cluster is easy with the included model specific mounting hardware, Classic Instruments' patented Zeus Speedometer Technology for push button calibration, and all the included sending units. Also features a built-in dimmer.



Model Specific Hardware

5 3/4" hole size for mounting
6 1/4" overall outside diameter



Fuel, 240-33 ohms



Optional Stainless Steel Bezel Upgrade



Gray

Tan

White

Black



1967 - '68 Mustang Package

The 1967-'68 Mustang Package is great for personalizing the interior of your classic Pony car! The set includes a standard black camera-case OEM style bezel. It is pre-wired and includes all necessary sending units and mounting hardware. Consider upgrading to the brushed aluminum finish bezel as used on "Deluxe" models. Available with an optional low volt sender warning light (part no. SN11)

Fuel, stock 75-10 ohms, sending unit not included



Velocity Black Series
Standard Camera Case bezel

All American
Optional Brushed
Aluminum bezel,
and optional 3-piece
trim set is available

AVAILABLE SERIES

- | | |
|------------------------|----------------|
| All American Nickel | SG Series |
| All American Tradition | Traditional |
| All American | Velocity Black |
| AutoCross Gray | Velocity White |
| AutoCross Yellow | Vintage |
| Classic White | White Hot |
| G/Stock | |
| Hot Rod | |



1967 – '68 Camaro Package

The 1967-'68 Camaro Package features LED turn signals, a high-quality OEM style dash bezel. The assembled unit comes complete with mounting hardware, wiring harness, and all necessary sending units. This great set will also fit 1967-'68 Pontiac Firebirds!



AVAILABLE SERIES

All American Nickel
All American Tradition
All American
AutoCross Gray
AutoCross Yellow
Classic White

G/Stock
Hot Rod
Nostalgia VT
SG Series
Traditional
V8 Red Steelie

Velocity Black
Velocity White
Vintage
White Hot

High beam lens assembly not included.

Velocity White

Fuel, stock 0-90 ohms,
sending unit not included



1970 – '72 Chevelle SS Package

The 1970–'72 Chevelle SS Package features a 3 3/8 in. speedometer, tachometer, and Quad (fuel (0–90), oil, temp, volt) gauge mounted into a reproduction dash carrier. The kit is ready to install into your existing dash bezel housing and includes mounting hardware, wiring harness, and necessary sending units. This package is for use only with the SS model instrument cluster. Also fits El Camino SS & Monte Carlo SS.



Fuel, stock 0–90 ohms, sending unit not included

Velocity Black

Dash bezel not included.

AVAILABLE SERIES

- All American Nickel
- All American Tradition
- All American
- AutoCross Gray
- AutoCross Yellow
- Classic White
- G/Stock
- Hot Rod
- Nostalgia VT
- SG Series
- Traditional
- V8 Red Stealie
- Velocity Black
- Velocity White
- Vintage
- White Hot



Direct-fit Truck Packages

BY YEAR, MAKE & MODEL

For a complete list of available styles and options for each package please visit our website. Don't see an option that fits your plan? Give us a call to discuss customization options!

(800) 575.0461

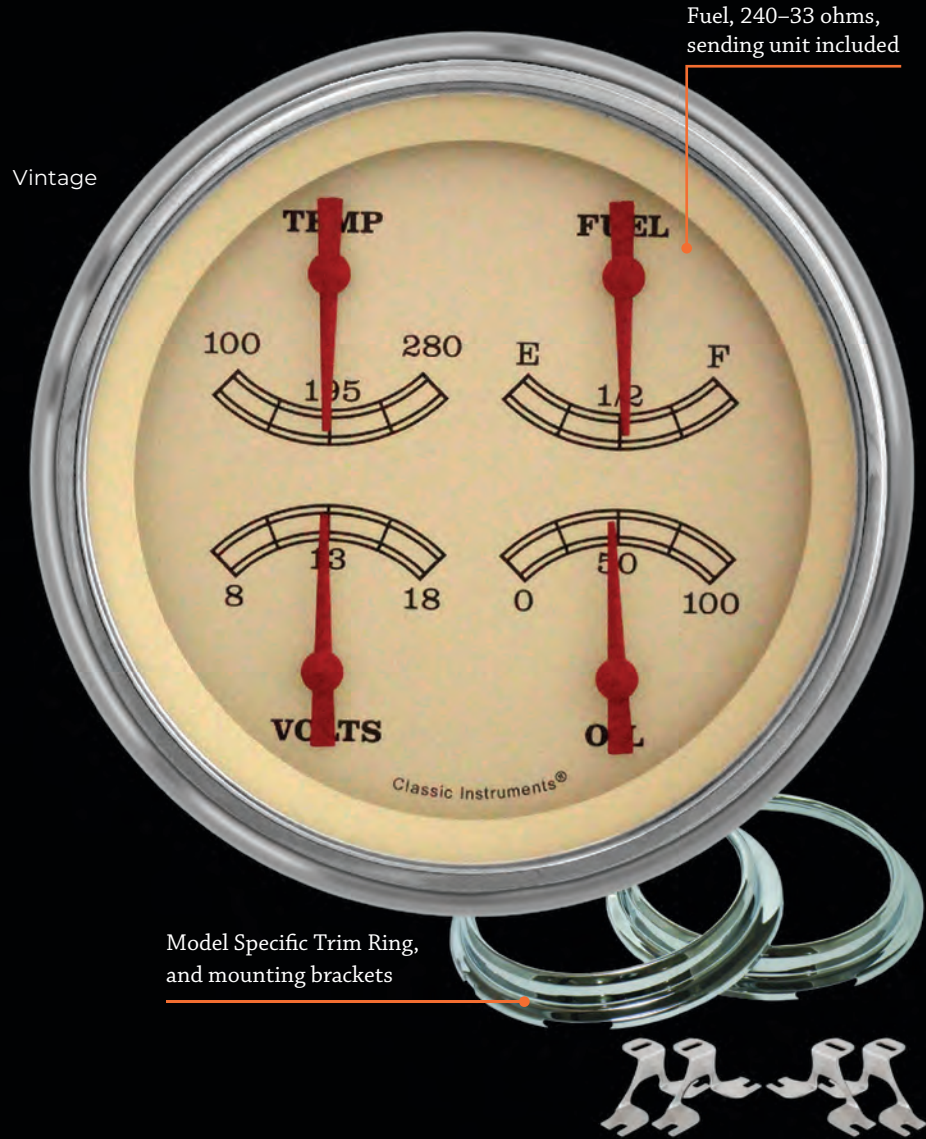
1947 - '53 Chevy & 1954 - '55 Chevy Truck Packages

The 1947-'53 GM & 1954-'55 Chevy Truck Packages include a Quad gauge and your choice of a speedometer or Speedtachular. The packages include model specific trim rings, mounting hardware, and all necessary sending units; arrives ready to install.



Model Specific Trim Ring, with LED lighting

All American Nickel



Fuel, 240-33 ohms, sending unit included

Vintage

Model Specific Trim Ring, and mounting brackets

AVAILABLE SERIES

All American Nickel
 All American Tradition
 All American
 AutoCross Gray
 AutoCross Yellow
 Classic White
 G/Stock
 Hot Rod

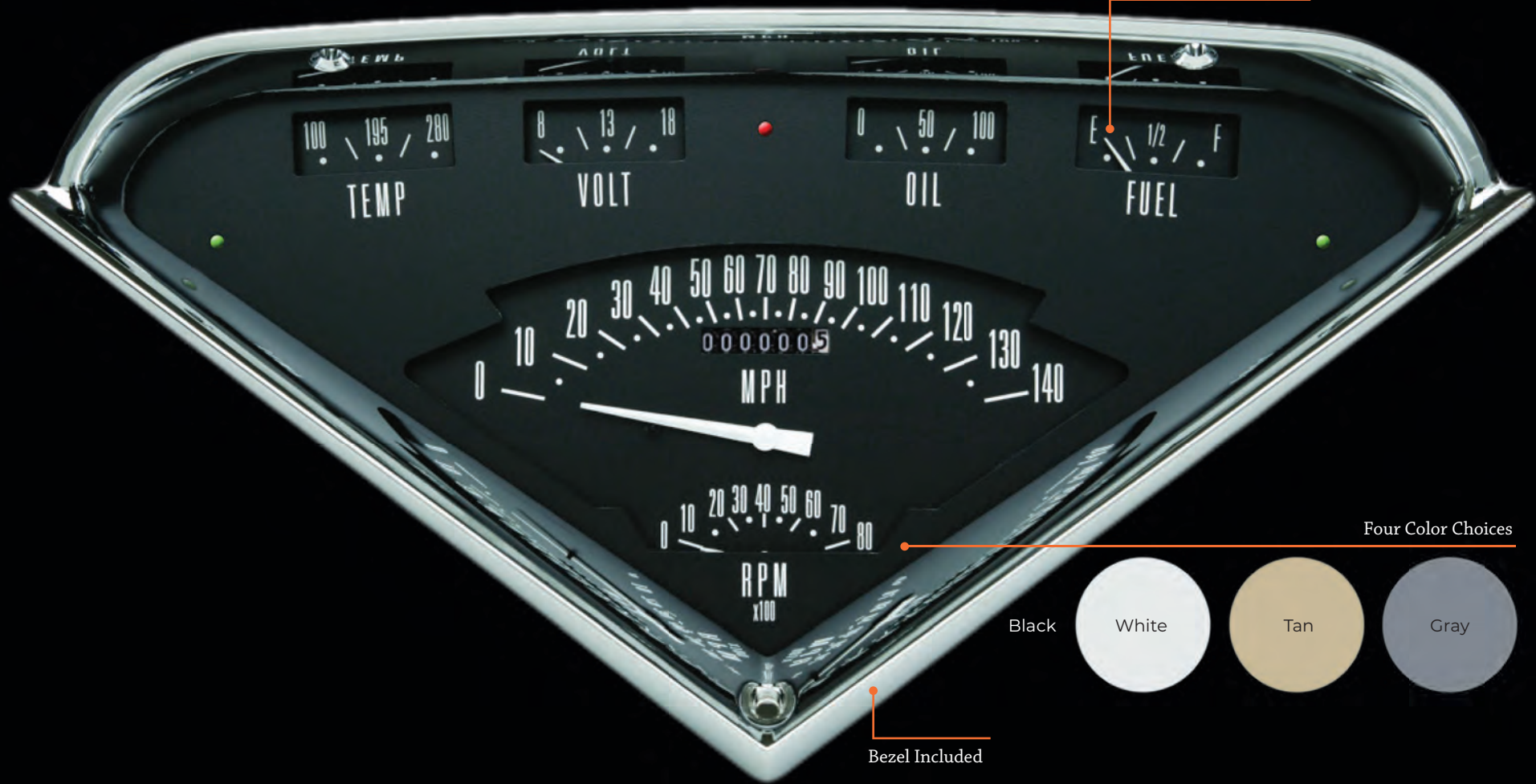
Nostalgia VT
 SG Series
 Traditional
 V8 Red Steelie
 Velocity Black
 Velocity White
 Vintage
 White Hot



Tach Force™ 1955 – '59 Chevy Truck Package Second Series

The Tach Force package is for Chevy trucks released in mid 1955 through 1959. It features a dual layer design with LED illumination. The completely assembled and ready to install package includes the bezel, wiring harness, installation hardware and all necessary sending units. This product is a great way to update your 1955-'59 Chevy pick-up, Suburban, or panel truck.

Fuel, stock 0–30 ohms, sending unit not included



Four Color Choices

Black

White

Tan

Gray

Bezel Included



1953 – '55 Ford F-100 Truck Package

The 1953-'55 Ford F-100 package is a direct fit all inclusive upgrade to your truck. The unit arrives ready to install with a machined aluminum bezel, push button calibration, LED illumination, integrated turn signals, a blue Halo high beam indicator, wiring harness, and all necessary sending units.

Fuel, stock 75-10 ohms,
sending unit not included



Bezel Included

Five Color Choices

Tan

White

Black

Gray

Original



1956 Ford F-100 Truck Package

The 1956 Ford F-100 package is a direct fit all inclusive upgrade to your truck. The completely assembled unit includes the housing, wiring harness and all necessary sending units. Features include push button calibration, LED illumination, integrated turn signals and a red Halo high beam indicator.

Four Color Choices

Black

Tan

White

Gray



Dash bezel not included, use original or reproduction.

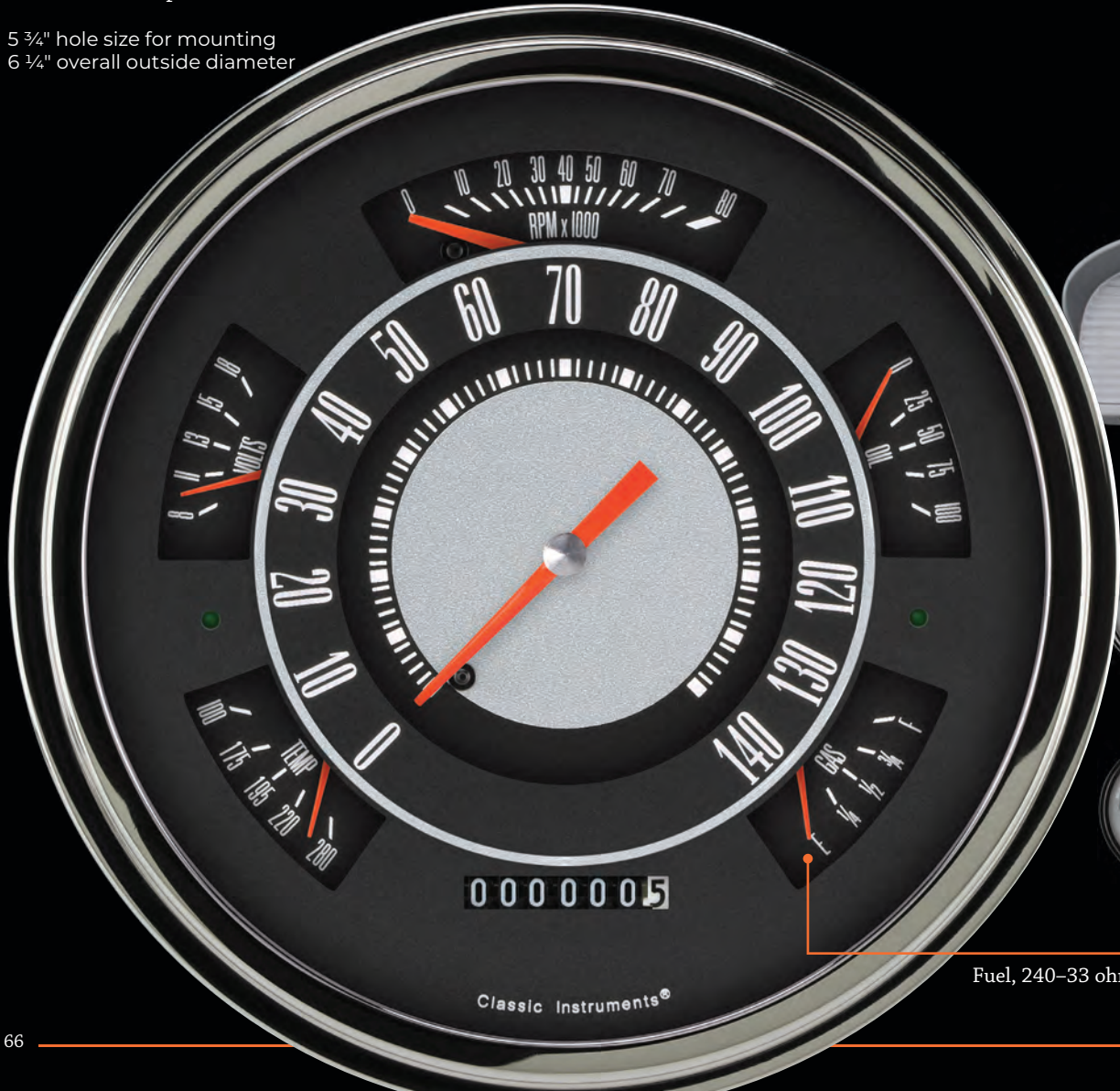
Fuel, stock 75-10 ohms, sending unit not included



1961 – '66 Ford F-100 Package

This all-electric, direct fit unit mounts from the front into the stock dash of the '61–66 Ford F-100. The package arrives ready to install with the included wiring pigtail, all necessary sending units, mounting hardware, and push-button calibration. Lighting is provided with warm white LEDs, a built-in dimmer, and a molded “light intensifier” ring to ensure bright, even light across the entire cluster. Indicator lights include left and right turn signal as well as a red “halo” high beam hidden at the top of the tachometer.

5 ¾" hole size for mounting
6 ¼" overall outside diameter



* For reference only. Dash housing not included



Optional Matte Black Bezel Upgrade



Gray

Tan

White

Black

Fuel, 240–33 ohms



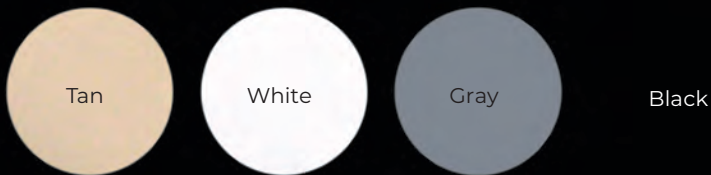
1964 - '66 Chevy Truck Package

This all-electric 1964-66 Chevy truck direct-fit cluster arrives ready to install directly into the stock dash of 64-66 trucks; no cutting or alterations necessary. It features an easy snap-in wiring harness designed to re-use the factory dash bezel, to maintain the original styling of the vehicle. It has been upgraded with bright LED lighting for even illumination and clear nighttime readability.

Includes scratch-resistant lens



Four Color Choices



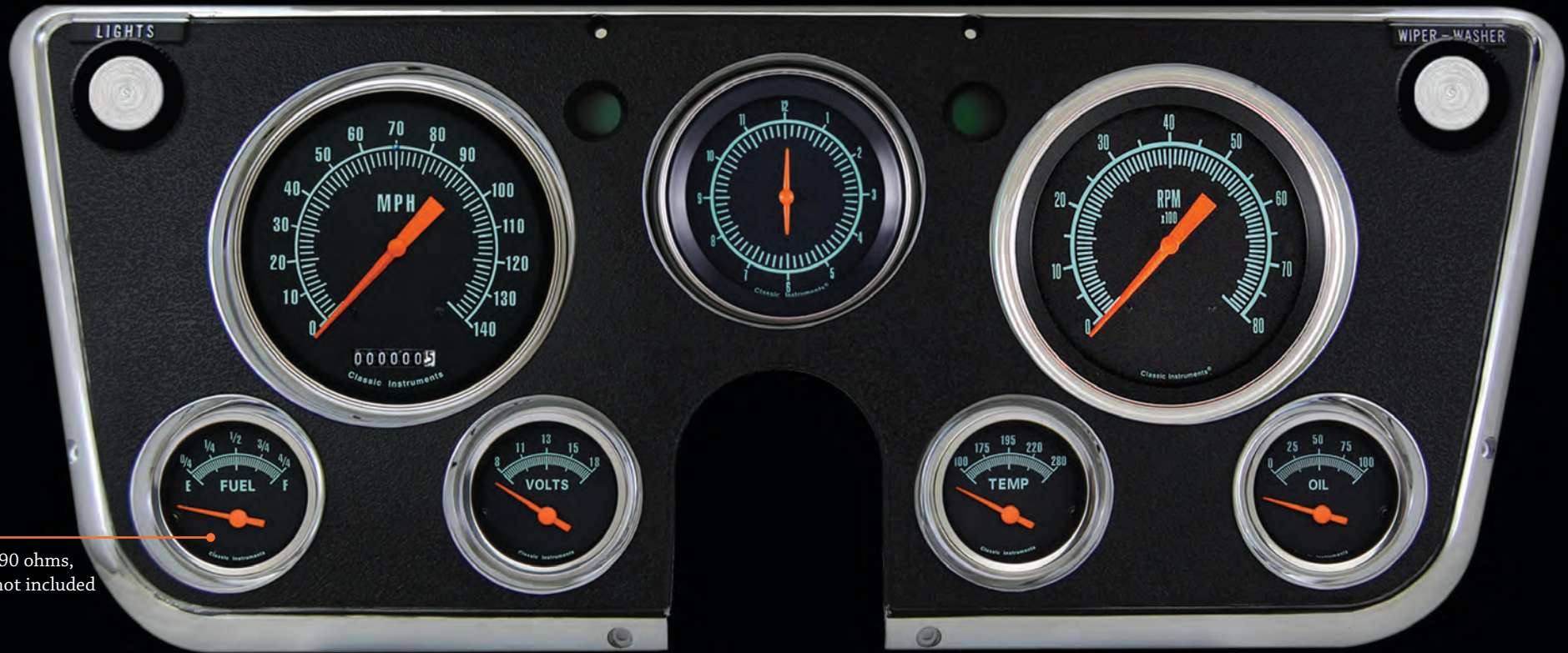
The cluster features a fuel sending unit selector switch, which can be set for compatibility with the existing/factory fuel sending unit, no new sending unit necessary.

Bezel not included.



1967 - '72 Chevy Truck Package

The 1967-'72 Chevy Truck Package is a completely assembled, ready to install, unit for use with your Chevy or GMC truck. The instrument panel includes a blue LED high beam indicator in the face of the speedometer, the dash bezel, pre-wired electrical connections with a wiring harness, mounting hardware, and all necessary sending units.



Fuel, 0-90 ohms,
sender not included

Bezel included.

G/Stock

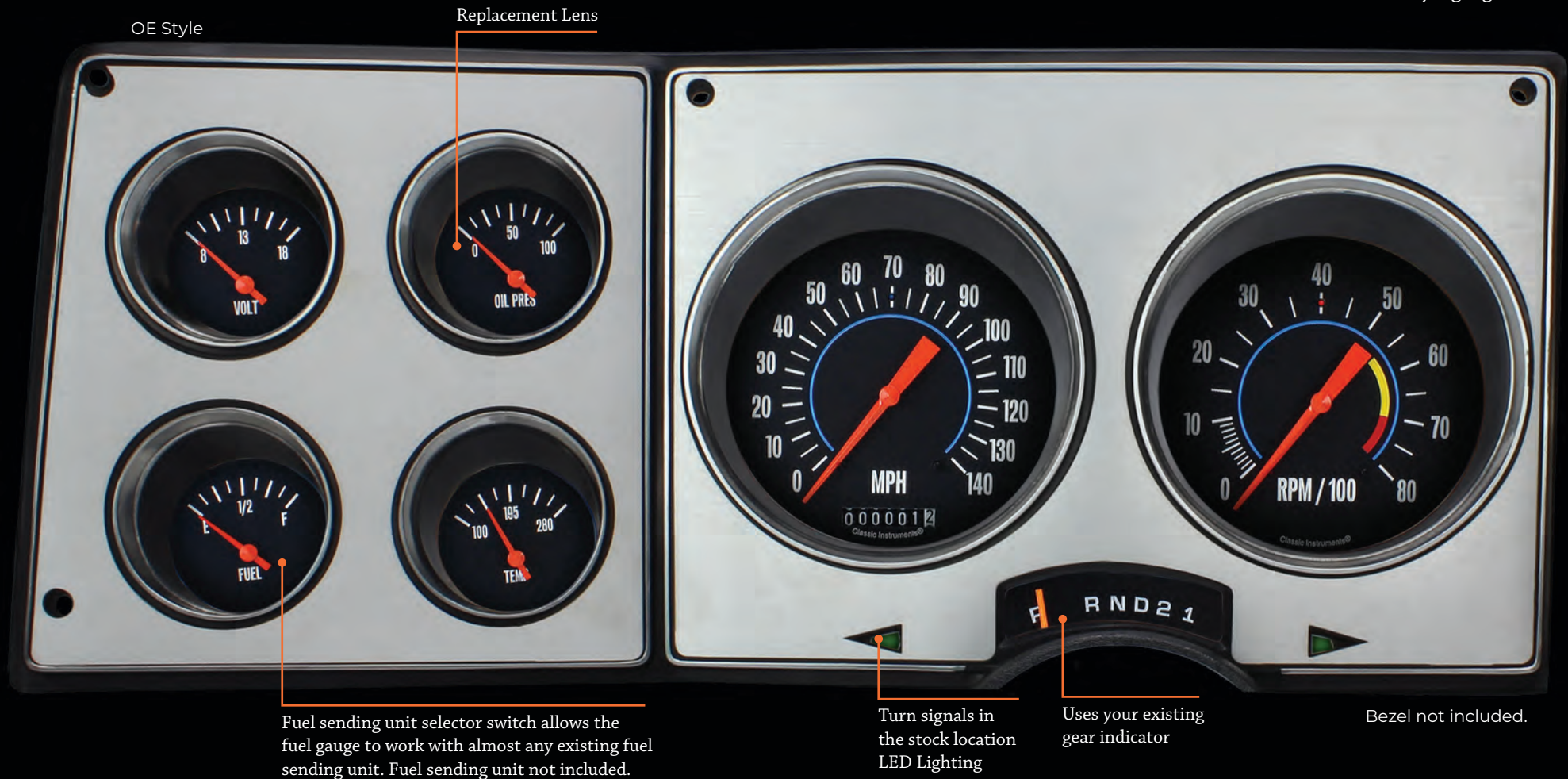
AVAILABLE SERIES

- | | |
|------------------------|----------------|
| All American Nickel | Nostalgia VT |
| All American Tradition | SG Series |
| All American | Traditional |
| AutoCross Gray | V8 Red Steelie |
| AutoCross Yellow | Velocity Black |
| Classic White | Velocity White |
| G/Stock | Vintage |
| Hot Rod | White Hot |



1973 – '87 Chevy/GMC Truck Package

The '73-'87 Square Body Direct-fit cluster is designed to drop directly in place of the stock cluster in '73-'87 Chevy and GMC trucks, Suburbans, and Blazers. The package features many stock inspired elements in an all-electric, easy to install package. It is available with several different Classic Instruments' style gauges.



Fuel sending unit selector switch allows the fuel gauge to work with almost any existing fuel sending unit. Fuel sending unit not included.

Turn signals in the stock location LED Lighting

Uses your existing gear indicator

Bezel not included.

AVAILABLE SERIES

G/Stock	Velocity Black
Hot Rod	Velocity White
OE Style	White Hot
Silver Gray	



Model Specific Insert Kits

1967–69 Plymouth Barracuda



AutoCross Yellow, full-sweep smalls



AutoCross Yellow, short-sweep smalls

AVAILABLE SERIES

AutoCross Gray	Velocity Black
AutoCross Yellow	Velocity White
G/Stock	White Hot
Hot Rod	



Classic Instruments, in partnership with Classic Dash, is able to offer several model specific kits using their dash inserts and our universal fit round gauges. Halo™ turn signals and a blue high beam are built into the speedometer and all necessary sending units are included.

(800) 575.0461

1970–76 Dart



Velocity White Series, full-sweep smalls



Velocity White Series, short-sweep smalls

1979–86 Fox Body



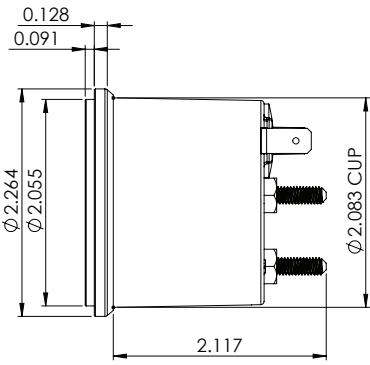
Hot Rod Series, full-sweep smalls



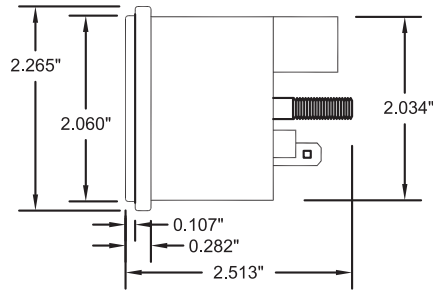
Hot Rod Series, short-sweep smalls

MANY ADDITIONAL MODELS AVAILABLE!

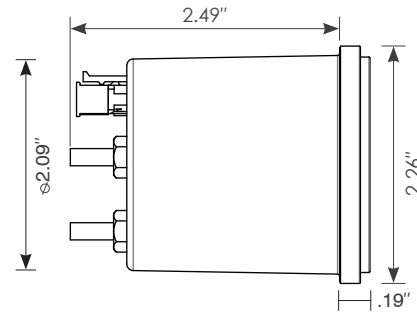
Gauge Dimensions, Standard Production Gauges



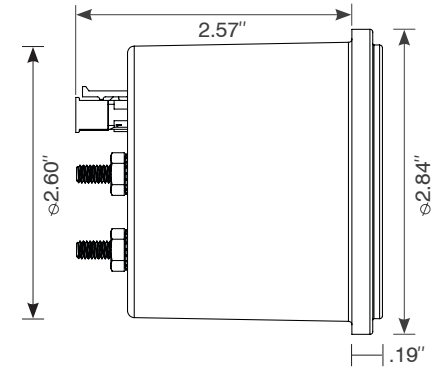
2 1/8" Fuel, Temp, Oil, Volt



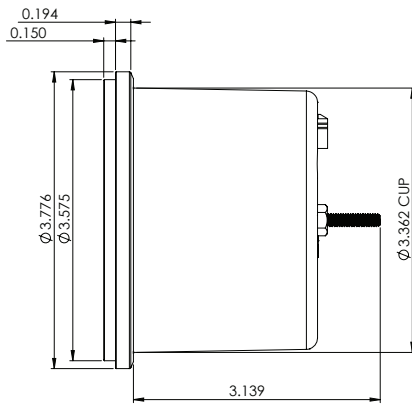
2 1/8" Clock



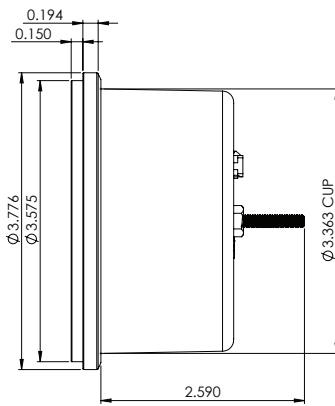
All 2 1/8" Full Sweep Gauges



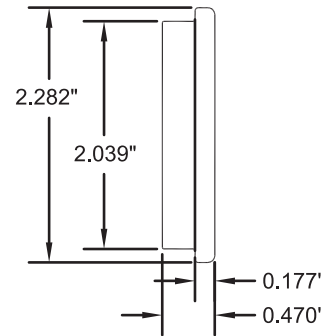
All 2 5/8" Gauges



3 3/8" Speedometer & Ultimate



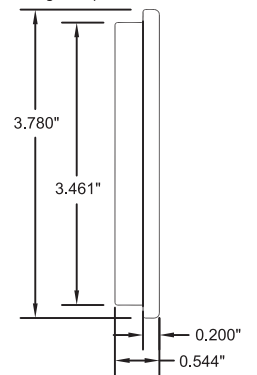
3 3/8" Tachometer & Quads



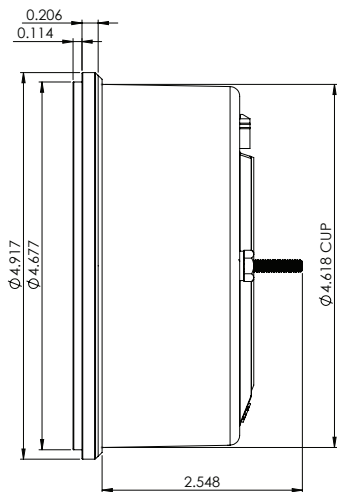
2 1/8" High Step Bezel



2 5/8" Performance Bezel



3 3/8" High Step Bezel



4 5/8" Speedometer, Tachometer, & Quads

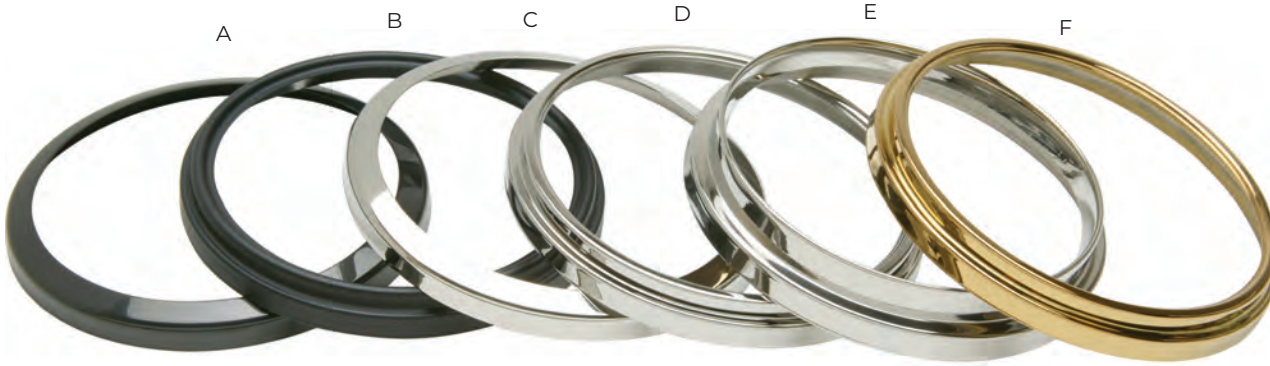
Gauge Description	Hole Size	Bezel Diameter	Depth w/Studs	Gauge Description	Hole Size	Bezel Diameter	Depth w/Studs
3" Speedometer	3.38"	3.75"	3.14"	2" FOTV	2.13"	2.25"	2.12"
3" Tachometer	3.38"	3.75"	2.59"	2" Aux. Gauges	2.13"	2.25"	2.12"
3" Duals & Quads	3.38"	3.75"	2.59"	2" Clocks	4.63"	3.75"	2.40"
3" Clocks	3.38"	3.75"	2.5"	2" Esquire*	2.6"	3.07"	n/a
5" Speedometer	4.63"	4.95"	2.55"	4" Esquire Speedo*	4"	4.75"	3.9"
5" Tachometer	4.63"	4.95"	2.55"	4" Esquire Tach*	4"	4.75"	3.13"
5" Quad	4.63"	4.95"	2.55"	Big Ol' Gauge (BOG)	7.63"	7.81"	3.75"
5" Tetra	4.63"	4.95"	2.25"	6-Pack	5.75"	6.25"	3"

*The Esquire™ series requires a square opening for mounting. Each set includes a removable adhesive template to aid in cutting the proper size holes in the proper place.

Design Options

Bezel Options

The bezel is the outer ring that holds the glass to the gauge cup and seals the gauge. Most standard gauges offer the option to upgrade the bezel. Bezels are available in Black Chrome Radial (A), Matte Black Low Step (B), Stainless Radial (C), Stainless Low Step (D), Stainless High Step (E), and Gold Low step (F). Black Chrome and Stainless Radial bezels only allow for the use of curved glass. High Step bezels are not available in 4 5/8".



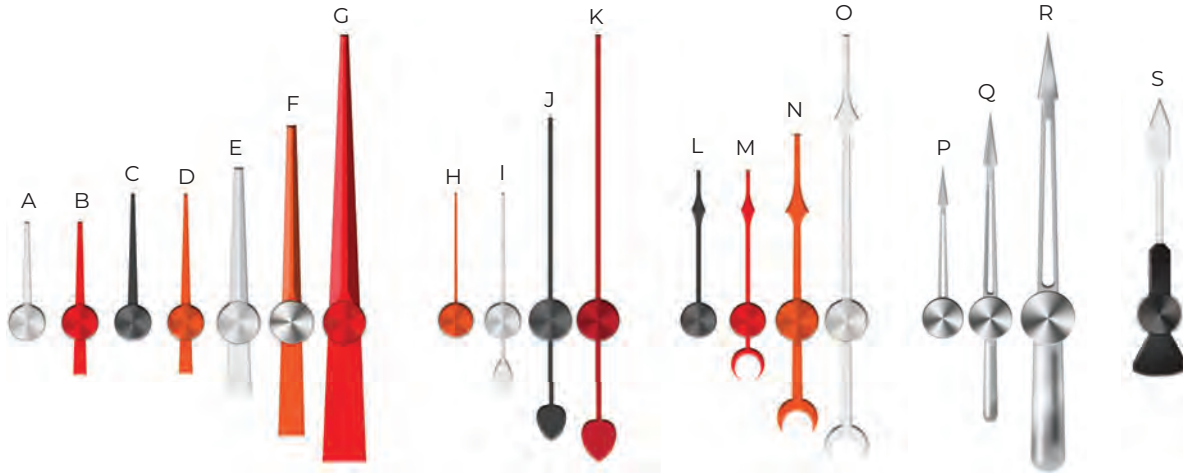
Diffuser Options

The diffuser is a trim ring within the gauge that is visible beneath the glass along the outer edge of the dial face. Most standard gauges offer the option to specify a diffuser color different from that of the gauge face. Standard color options include: Red, White, Black, Nickel, Gray, Tan, or Silver.



Pointer Options

Pointer style and color can be specified and changed for any standard production gauge. Style options include Teardrop, Crescent Moon, Pool Cue, Speedster, and Bomber in your choice of Black, Nickel Red, Orange, Red, or White. Other colors are available by special order. All pointers may be ordered with a spun aluminum hub and some 2 inch pointers can be ordered without a tail.



- A.....3" Quad gauge Pool Cue without tail..... White
- B.....3" Quad gauge Pool Cue with tail..... Red
- C.....2" Pool Cue without tail.....Black
- D.....2" Pool Cue with tail.....Orange
- E.....5" Quad gauge Pool Cue White
- F.....3" Pool Cue with spun hub.....Orange
- G.....5" Pool CueRed
- H.....2" Teardrop without tail.....Orange
- I.....2" Teardrop with tail White
- J.....3" Teardrop..... Black

- K.....5" Teardrop.....Deep Red
- L.....2" Crescent Moon without tail...Black
- M.....2" Crescent Moon with tail.....Red
- N.....3" Crescent Moon.....Orange
- O.....5" Crescent Moon White
- P.....2" Speedster.....Chrome Plated
- Q.....3" Speedster.....Chrome Plated
- R.....5" Speedster.....Chrome Plated
- S.....3" Bomber™ White w/Black tail



Glass Options

Standard production gauges use glass lenses that resist fogging and scratching. Curved or flat glass lenses are available. Please check part numbers relevant to each series to determine the type of glass that comes standard. The last letter will be "F" indicating flat or "C" indicating curved. In most cases the glass style can be upgraded. Radial bezels only allow for the use of curved glass.

Lighting Options

LED Illumination Upgrade

Standard gauges using incandescent illumination can be upgraded to use LED illumination with a bright white tone. Custom colored illumination is available through special order.

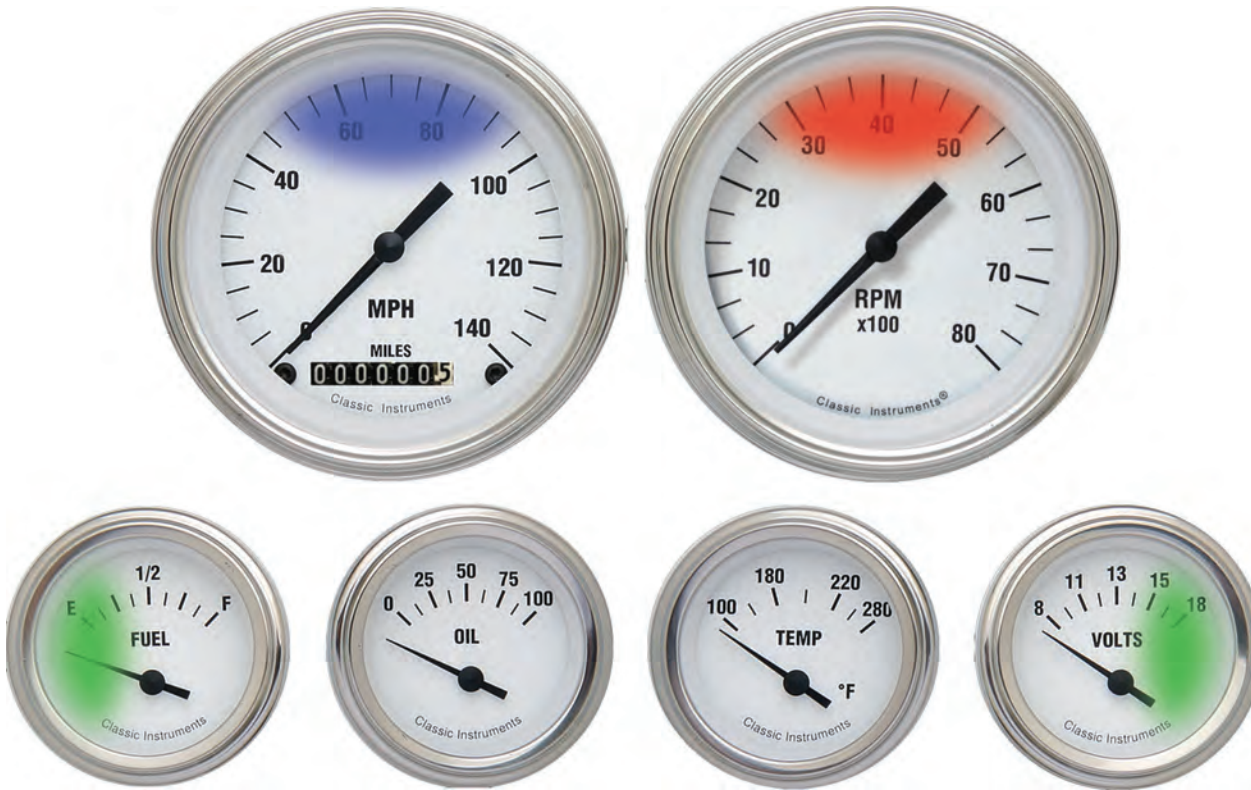
This upgrade requires a special dimmer (part no. LEDDIM) for brightness adjustment. Dimmer sold separately.

LED Indicator Light Upgrade

LED indicator lights added to the face of your gauge can be a great way to get a retro look using modern technology. Colors include green, red, blue, and amber. You may specify color and placement within the gauge face.

Halo™ Indicator Light Upgrade

Halo lighting casts a soft glow across the gauge face in place of traditional indicator lights. They can be used to indicate various systems such as turn signals, high beam, brake, engine warning, and low fuel. Indicator location and Halo color to represent each system is based on personal choice. Specify all indicators in one instrument or place them throughout your set based on the dash layout.



Halo™ lighting placed in multiple gauges



LED indicator lights mounted in the gauge face

Halo™ indicators in a single gauge



LED dimmer

Sending Units & Accessories

Speedometer Sending Units



The SN16 is compatible with GM transmissions: TH350 / 400, 700R4, 2004R, Powerglide, Richmond. Chrysler: 727 / 904.



The SN16F is compatible with Ford transmissions: C4/C6, AOD, FMX, Borg Warner T10, Borg Warner 6 Speed, Tremec T5.



The SN16C is used when clearance issues (due to frame or body proximity) prevent the use of the SN16. It is compatible with Muncie transmissions. The SN16C can be used with SNCGM or SNCFD cable extenders.



The SN16M is for use with metric applications.



The SN16VW includes a 48" flexible cable to accommodate Volkswagen and Porsche applications which use a front hub cable drive.

* Certain mid-50's Ford-O-Matic transmissions require a special adapter.

The SN74Z is necessary when using a non-ZST speedometer with an Electronic Control Module (ECM) or Vehicle Speed Sensor (VSS) signal. The unit features in line installation between the transmission pulse signal or ECM speed output and your electronic speedometer. It offers easy and accurate speedometer calibration with the push of a button. The filtered power source eliminates interference, and the small size allows it to be mounted anywhere inside your vehicle. The SN74Z will work with most aftermarket electronic speedometers and it can be configured to correct diesel and gas tachometer signals.



Accessories



ECM Signal Filter. The SN79 is a filter for the speedometer sending unit designed to eliminate interference from the Electronic Control Module (ECM).



Mag Proximity Sensor. The SN78SM is a magnetic proximity sensor that will respond to pulse signals across a 1/16" gap. For use in applications without a mechanical speedometer cable connection. (For use only with 8 pulse speedometers or in conjunction with the SN74Z)



6 Gauge Wiring Harness. The SN84 is a six gauge wiring harness for use with pre-packaged gauge sets. This package includes quick disconnect connections and labeled, color coded wires.



Steel Speedometer Bullet Housing. A steel upgrade to the original aluminum speedometer gear sleeves or "bullets" on GM transmissions. This upgrade will help ensure proper engagement with the gear and help prevent fluid leakage.



Ford Trans Sender Adapter. The SN17 allows a GM style pulse signal generator to work with a Ford style transmission.



Chrome Tachometer Cup. The MT51 is a chrome cup designed to hold a 3 3/8" tachometer. Use it to mount the tachometer to your dash or steering column for a nostalgic look. Mounting hardware is included.

MT52- Matte Black Tachometer Cup.



2 1/8" 2 Gauge Panel. The MT55 is an under dash mount designed to accept two 2 1/8" gauges. Use it to mount any additional gauges separately from the instrument cluster.



2 1/8" 3 Gauge Panel. The MT56 is an under dash mount designed to accept three 2 1/8" gauges. Use it to mount any additional gauges separately from the instrument cluster.



2 5/8" 2 Gauge Panel. The MT58 is an under dash mount designed to accept two 2 5/8" gauges. Use it to mount any additional gauges separately from the instrument cluster.



2 5/8" 3 Gauge Panel. The MT59 is an under dash mount designed to accept three 2 5/8" gauges. Use it to mount any additional gauges separately from the instrument cluster.

Fuel, Temperature, and Oil Pressure Sending Units & Accessories

Tank Adapter Flange

A

The SN41 is used to adapt 1936–56 Ford fuel tank openings to accept standard SAE five hole sending units by changing the original six hole pattern. The package includes an aluminum adapter plate and stainless countersunk Phillips head screws.



Fuel Tank Sending Units

B

Fuel tank sending units use the standard SAE five hole mounting pattern and are adjustable for tank depths of 6" to 24". The set includes float assembly, gasket, mounting screws, and instructions.



Deluxe Fuel Tank Sending Units

C

The SN33 Deluxe Fuel Sending Unit features a 240–33 ohm heavy duty resistance movement that ensures accuracy, reliability, and longevity regardless of vibration. The sender housing rotates 360 degrees to ensure float clearance of tank sidewalls, internal baffles, and other obstructions. The stainless steel mounting plate uses a 3/8" OD x 13" pick up tube which may be shortened to match your tank depth. Not for use in foam filled cell applications.



Tube Style Fuel Sending Units

D

The Tube Style Fuel Sending Units are ideal for applications where conventional swing arm senders will not fit due to clearance issues. They are also less susceptible to cause erratic readings due to fuel slosh in a tank where baffles are not present. Units are available for tank depths of 6–24" in one inch increments and various ohm ranges, see below. The length of the sender tube is specific to tank depth and requires at least a 1/4" clearance between the bottom of the tube and the bottom of the tank. Each unit uses a standard SAE five hole mounting flange and comes with the necessary gasket and installation hardware.



Ford Oil Pressure Bushing Kit

E

The SN57F is an oil pressure sending unit bushing kit necessary for converting a 1/8" NPT sender outlet to a 1/4" NPT sender outlet.

GM Oil Pressure Bushing Kit

F

The SN57G is an oil pressure sending unit bushing kit that may be necessary for installation of an oil pressure sending unit on some GM engines.



Temperature Sending Units

G

All Classic Instruments temperature gauges require a Classic Instruments supplied sending unit for correct and reliable operation. All senders are equipped with self sealing, tapered threads, and are available in 1/8", 1/4", 3/8", 1/2" NPT and 12mm to fit most stock and aftermarket intake manifolds.



Oil Pressure Sending Units

H

The oil pressure sending units supplied by Classic Instruments provide accurate pointer movement in adverse conditions such as heat, vibration, and acceleration. Anodized steel construction uses 1/8" NPT threads.



Fuel-Link

I

Solves fuel gauge issues by acting as an interface between short sweep fuel gauges and fuel senders. It corrects gauge and sender resistance mis match and dampens pointer movement caused by fuel slosh. With Fuel-Link there is no need to drop the tank to swap fuel senders, simply connect it in line and use the on-board push button to calibrate the existing fuel sender to the existing fuel gauge. The unit is preset to work with eight common fuel sender ranges, or it can be custom calibrated. An optional low fuel light is available to warn when 1/8 of a tank or less remains. The output signal is dampened electronically ensuring a steady pointer, during movement due to an un-baffled tank or rough roads. Fuel-Link was inspired by Zeus Speedometer Technology.



Compatible Fuel Sender Ranges

- 240–33 ohm..... Standard After-market
- 0–90 ohm GM Type '66 and later
- 0–30 ohm GM Type '64 and earlier
- 16–158 ohm Ford Type '87 and later
- 75–10 ohm Ford Type '86 and earlier
- 90–0 ohm Toyota and Nissan '85 and later
- 40–250 ohm..... Late model GM
- 10–180 ohm VDO
- 0–350 ohm Custom ohm range

Measuring 3" x 2" x 1" the Fuel-Link™ unit is small enough to be easily mounted anywhere in your vehicle!

SKY & DRIVE™

The Sky Drive speedometer sending unit turns your electronic speedometer into a GPS controlled speedometer by allowing it to receive a signal from the Global Positioning System (GPS). GPS triangulation allows for accurate speed measurement, eliminates the need for calibration while driving, and allows for the use of a speedometer that measures speed in Miles Per Hour (MPH), Kilometers Per Hour (KPH), or Knots. The Sky Drive does not require an additional speed sensor from the transmission and the omnidirectional antenna allows for a variety of mounting locations. Additional programming at the time of order allows for compatibility with existing cruise control or speed controlled relay, and for the Sky Fence feature which allows the activation of any relay triggered device to deter vehicle theft. The Sky Drive allows for only one additional programming option.

Sky Drive™ Options

Sky Drive™	Sky Fence™	Speed Activated Relay	Cruise Control Compatibility
X	X	-	-
X	-	X	-
X	-	-	X

The Sky Drive™ sending unit allows for the programming of one additional feature.



Shown installed



Measuring 3" x 2" and less than 1" thick, the Skydrive™ unit is small enough to easily mount anywhere in your vehicle!

Involvement & History

Community & Industry Involvement

Classic Instruments is a proud sponsor of community events and local charitable organizations to include:

- Charlevoix Community Foundation
- The Women's Resource Center of Northern Michigan
- Charlevoix County Humane Society
- Leadership Charlevoix
- Antrim Conservation District
- Kiwanis Club of Boyne
- Boyne City Police & Fire Departments
- Boyne City Public Schools
- Boyne Falls Public Schools
- Boyne Country Region AACA

We also believe in the values instilled by participating in athletic competition. It is our pleasure to be a sponsor in multiple Jr. Dragster competitions and to individually sponsor track champion Hunter "Ace" Acha.



Mini Wedge racer Trenten Klein

Other sponsored drivers include Jenny Treadwell, an NHRA division champion, Alex Taylor, a drag racer, Trenten Klein, a Mini Wedge racer in Northern Central MI, and the Howard racing team, featuring two local drivers. Additionally, we enjoy sponsoring a local Major League Softball team and supporting the annual Boyne City soap box derby.

Within the industry we enjoy sponsoring the Goodguys Trophy Dash award and the NSRA Pro's Pick award each year.

Since its inception in 1977, Classic Instruments has a history of involvement with the groups and associations that helped form the industry we are so proud to be a part of...

- '79 Inaugural NSRA Nationals attendee
- '83 Inaugural Goodguys Show attendee
- '85 SEMA membership
- '08 SEMA show attendance

Now, celebrating over 40 years of business, we continue each year to attend more than 20 trade shows and industry events including Goodguys' events, NSRA events, SEMA show, PRI, dealer open houses, and many others.

Product Warranty

Our warranty guarantees the original purchaser that the specified product is free from defects in materials and workmanship for a period of seven years. The manufacturer will repair or replace (at its discretion) any product that fails to conform to this warranty. All warranted products must be used in accordance with the manufacturer's instructions and for the purpose designed and intended. Any modifications, alterations, adverse environmental conditions (fire, flood, etc.) or attempted repair will void the warranty. Warranty is valid only for the original owner of the specified product.

Any product believed to be in need of warranty service must receive an RMA number and must be returned to

Classic Instruments for evaluation and testing. Based on the results of these tests and current product availability, the product may be repaired or replaced at the sole discretion of Classic Instruments. Owner is responsible for all charges relating to removal / installation of warranted products and all shipping and handling charges relating to returned warranted products. Upon purchase of the lifetime warranty the buyer agrees to the conditions stated above. For questions regarding warranty or product please call

800.575.0461

Also ask about our lifetime warranty.

Social Corner

Visit us in your favorite circles for the latest news, shows, and cool stuff!



WARNING This product can expose you to Lead which is known to the State of California to cause cancer or birth defects or other reproductive harm. For more information go to www.P65Warnings.ca.gov.

Additional Industry Affiliations :





PURE *M*ICHIGAN®

We proudly manufacture in the United States and support our troops, as well as local police, fire, and rescue service departments.



The finishing touch®

CLASSIC INSTRUMENTS

800.575.0461 | 826 Moll Dr., Boyne City, MI 49712 | classicinstruments.com 